



JES

WORLD LEADING INNOVATIVE SOLUTIONS

WWW.JESPLINDIA.COM





Welcoming Message



Welcome to Jagdev Engineering Solutions. We are global leaders driven by innovation. Since its inception, JES has been committed to providing quality components and service to the global passenger and commercial vehicle markets. I would like to appreciate deeply to the support of beloved customers, shareholders and all of the stakeholders which enabled us to take the business operations to a whole new level. We are equipped with state-of-the-art technology to contribute to society and solve various issues. Our widespread experience enables us to deliver the best services that exceed our clients' expectations.

Sukhdev Singh Jagdev, Managing Director



Presentation Agenda

1 About Us

2 Infrastructure

3 Our Products

4 Financials

5 Conclusion



About Us





Who We Are

Jagdev Engineering Solutions is an IATF 16949, ISO14001 and OHSAS 18001 certified company. We are a major manufacturer, exporter and supplier of components to the Automotive Sector, General Engineering, and Associated Industries. Established as early as 2008 in Derabassi in Punjab, India, the company has quickly mastered the finer intricacies of this domain. With a globally spread client base to cater to and an enviable reputation, JES has witnessed groundbreaking success in the domain.

The aim of the company is to offer the best products on a timely basis and achieve maximum client satisfaction. Under the visionary guidance of Mr. S.K.Saini, the company has achieved prominence in a quick time.



Mission

- Global Leadership by Innovation

Vision

- To be recognized as leaders in providing finished ready to use quality components and service to the global passenger and commercial vehicle markets.
- JES is committed to customer satisfaction and to the communities in which we live and conduct business.





Strategy

To use modern manufacturing equipment and adopt advanced quality management techniques that help us to:



Think Globally, Staying Lean and Competitive



Add Value to Our Products



Create Innovative Solutions
Focusing On Weight
Reduction



Anticipate The Needs
Of Our Customers



Profile

Our Group consists of 2 companies



LPC (UK) – CNC Machining Company



JESPL (India) - Aluminium Foundry,
CNC Machining and Sub Assembly

“

We offer our customers global services from prototypes to fully machined and sub assembled parts delivered direct to customer assembly lines globally.

”



Our Timeline

We kicked off as a small group with a local launching. In 1964 the team started machining components for commercial markets. After grinding for many years, we moved into the automotive sector in 1989 which further got expanded internationally in 2007 with Indian machining facility. In 2012, we developed the Indian aluminum foundry. Today, we proudly stand firm as a global manufacturer providing best quality components to commercial vehicle markets.



Launch

Local Manufacturing

1964

Began machining components for commercial markets

- ⑩ Defense
- ⑩ Aerospace
- ⑩ Offshore



Our Timeline

1989

Automotive Focus

2007

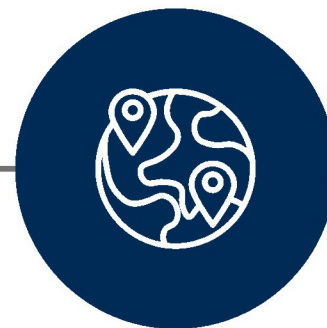
International
Expansion

2012

Aluminium Foundry
(India)

Present

Global Manufacturing
and support





Group Experience



We have been making quality parts for the automotive industry for the past 30 years.



We are strategic Tier 1 & Tier 2 suppliers to automotive clients supplying precision machined components castings and sub assemblies.,



Our achievements bear testament to our proud standing as a tier one supplier to many Blue chip automotive companies.



Our experience is valued by our customers during design stages through production cycles to delivering after sales service components.

WWW.JESPLINDIA.COM



Our Amazing Clients

The company is catering to the clients based in various countries like the UK, Japan, Germany, China, Singapore and India as well as numerous other European countries. Some of the clients of the company are as follows :





Our Strengths



International presence enable best cost solutions



We provide design engineering solutions including project development, working closely with customers



IATF16949, ISO14001, OHSAS18001 Accredited



Our engineers use advanced tools (magma flow and pro cast software) to design our gravity die-cast and High pressure die-cast tooling



We manage our own supplier network



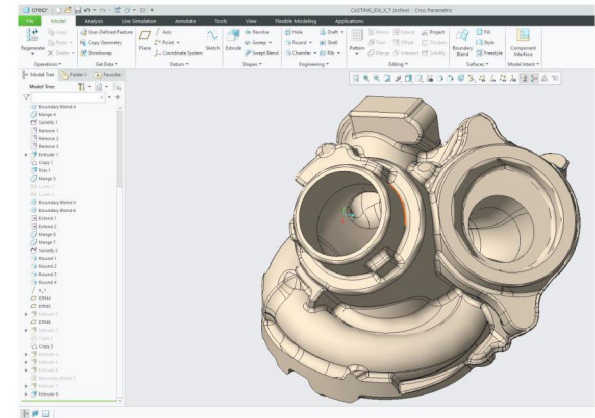
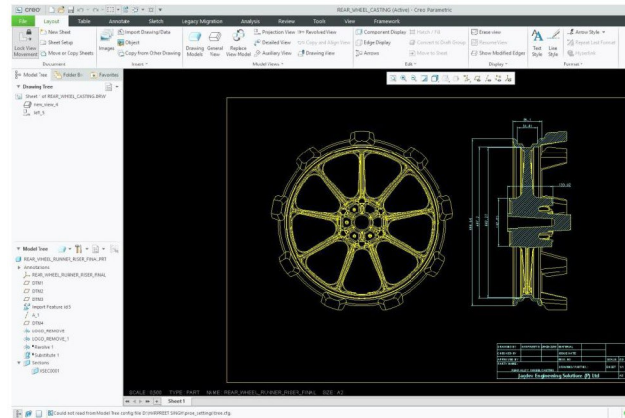
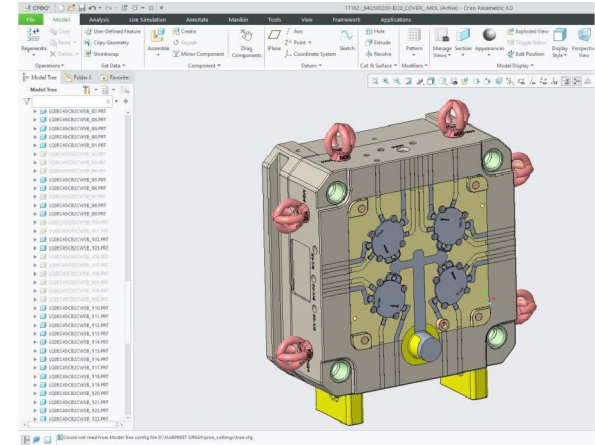
We manufacture parts to customer designs and innovate to offer best cost solutions



Design & Development

We have advanced Product & Die Design tool
"Creo 6.0" & "Auto CAD-2019".

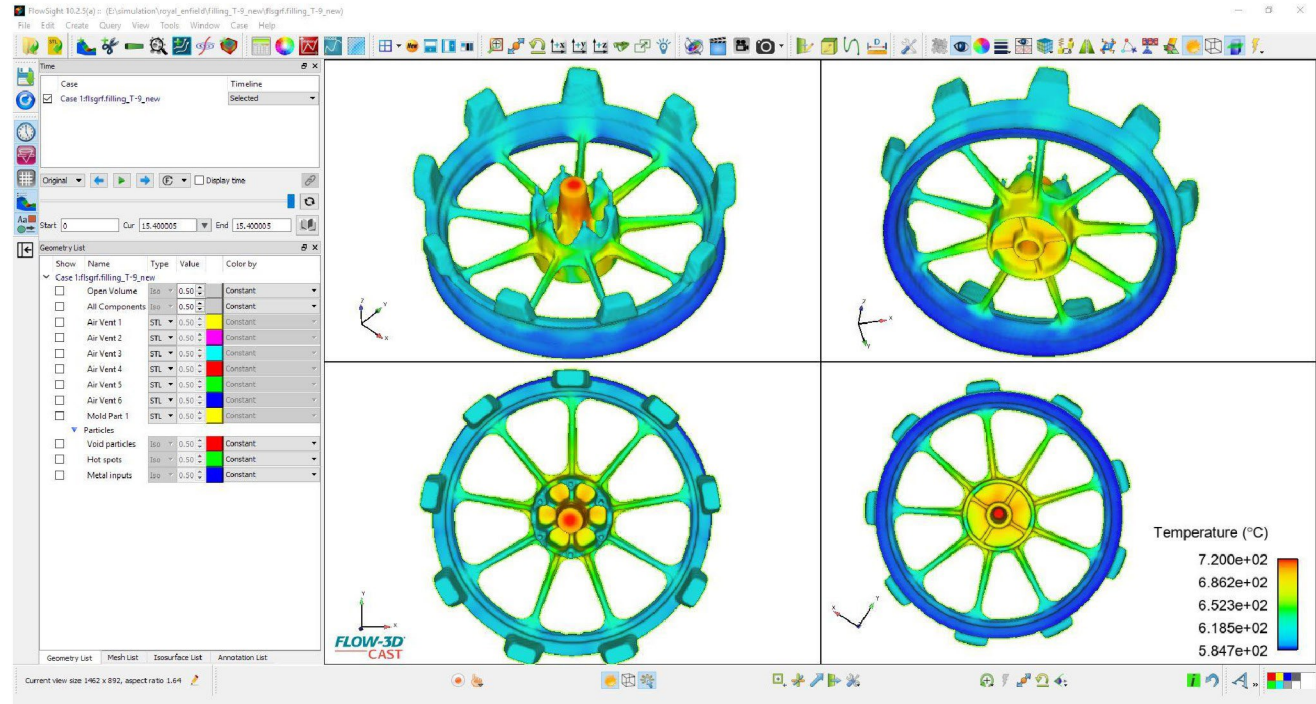
- 10 For 2D & 3D Comparison
- 10 To Analyze 3D Model
- 10 New Product Development
- 10 Engineering Changes
- 10 SPM Development
- 10 Die Design & Core Cavity Extraction
- 10 For 2D Detailing For Die Tools, Product & Floor Layout





Design & Development

We have advanced flow simulation software “FLOW 3D”, to analyze & ensure defect-free castings, to optimize yield and to finalize best Runner-Riser and Gate design.

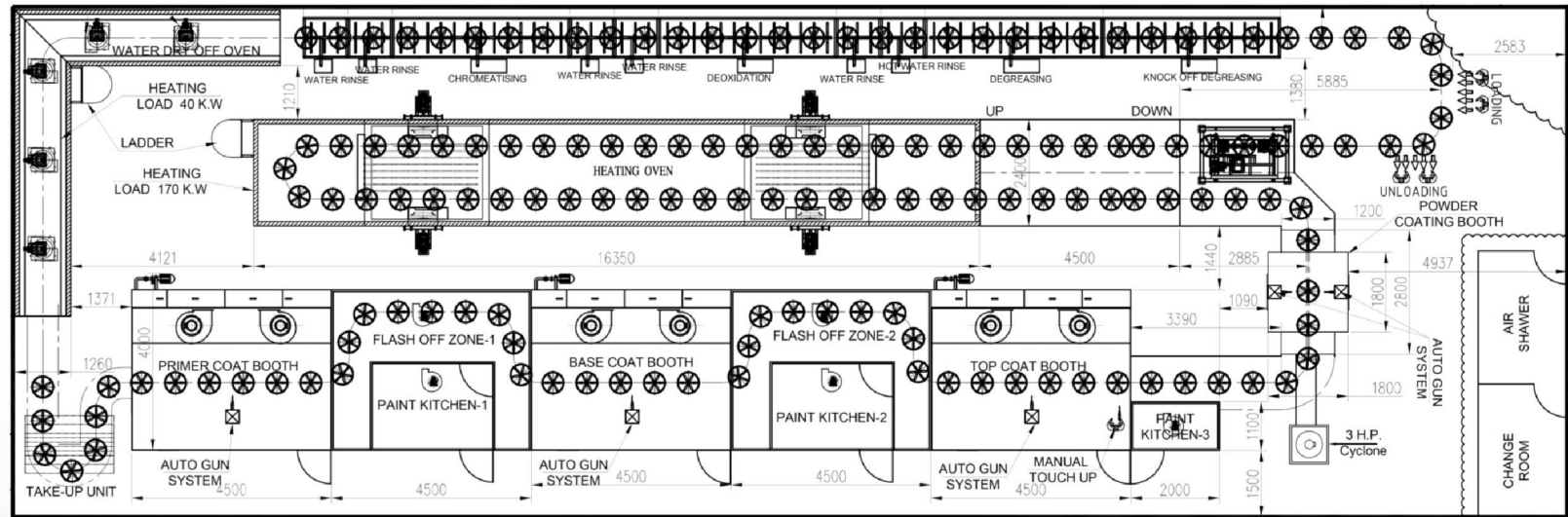




Advance Painting Facilities

We have conveyORIZED paint booth with the latest technology for

- Powder Coating
- Liquid Painting

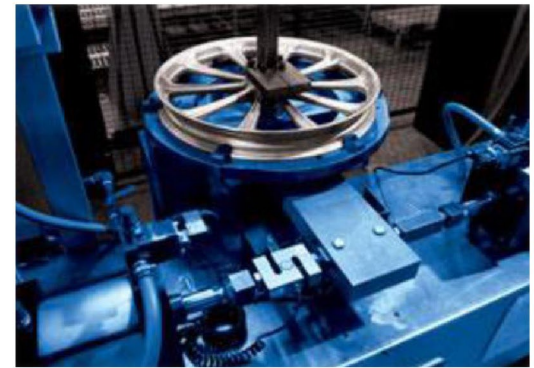




Upcoming Alloy Wheel Testing Lab Facility

Wheel testing involves a series of tests that are carried out to meet vehicle OEM requirements. The tests are performed using the following machines:

- ⑩ Leakage Testing Machine
- ⑩ Torsion Testing Machine
- ⑩ Radial Load Test Machine
- ⑩ Impact Testing Machine





Sales

- Product Planning
- Pricing
- Forecasting
- Product Lifecycle

Operations

- Management
- Forecasting
- Product Lifecycle

Engineering

- Product Strategy
- Product Planning
- Product Development
- Program Management
- Technology Research

Total Project Management

Marketing

- Product Strategy
- Product Planning
- Launch & PR
- Pricing/ Promotions
- Market Research
- Technology Research

Finance

- Product Planning
- Pricing
- Forecasting
- Product Lifecycle
- P&L Reporting

Customer Service

- Customer Research
- Product Lifecycle



*We provide a **personal touch**
in delivering to our customers.*



Team



Sukhdev Singh Jagdev
Managing Director

Achievements:



Team



Harminder Singh Jagdev
President



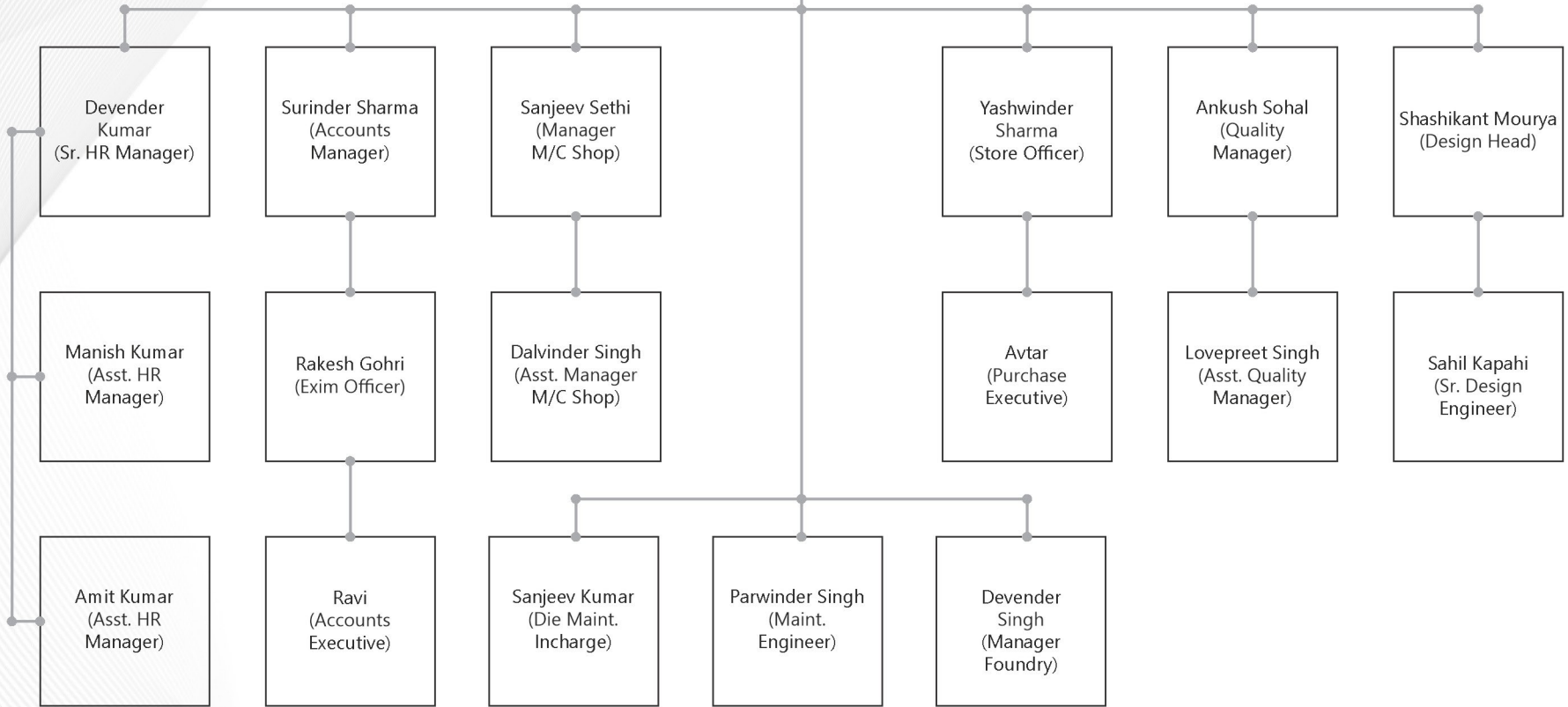
Tejinder Kaur Jagdev
President



S.K. Saini
C.E.O



Organization Structure Chart (Administration)





Infrastructure





Sites Overview

Site	Leicester Precision Components LPC
Country	UK (since 1964)
Process	Machining
Product Specialization	Braking, Suspension, Engine Boosting, Steering Systems, AC and Oil Cooling components
Employees	30





Sites Overview

Site	Jagdev Engineering Solutions (P) Ltd. JESPL-Machine Shop
Country	India (since 2008)
Process	Machining
Product Specialization	A/C and Oil Cooling components, Engine Boosting & Braking components Emission Control System castings
Employees	280

Jagdev Engineering Solutions (P) Ltd. **JESPL-Foundry**

India (since 2013)

Foundry

Engine Boosting Braking components Emission Control System castings

220



Infrastructure

Developed on a 44,000 m² (10 Acres) plot.



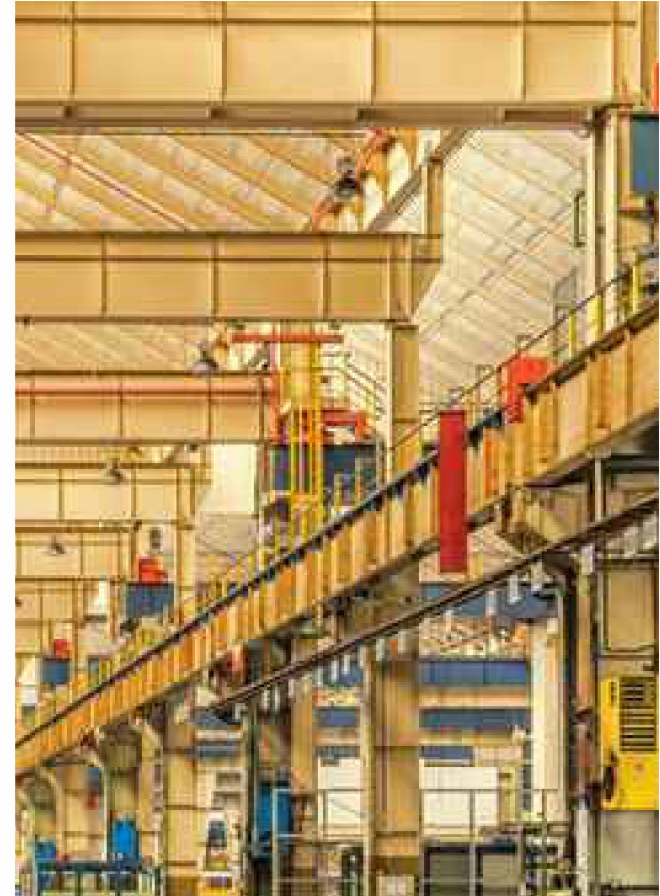
The site currently has 100,000 sq.ft/
10,000 sq.m covered work space.
Further extensions are ongoing to
complement our continual growth.



Key Points Of Manufacturing

Modern Casting Unit with in-house sand core manufacturing

- 10 core shooter and 1 core shooter on order
- 22 Gravity die casting machines.
- 4 HPDC machine (400T).
- 21 furnaces
- 2 Heat Treatment machines
- 4 De-coring machines
- 3 Knockout machines
- 2 Spectrometer
- Hardness tester
- Grain size testing equipment
- Moisture testing equipment
- Stick point testing equipment
- X-Ray & CT Scan machine
- Flow 3D simulation software
- 3 shot blasting machines
- 11 Band saw and cutting machines





Key Points Of Facilities

Modern CNC Machining Unit & State of the Art Inspection Laboratory

- 13 double pallet machining centres
- 30 turning centres
- 5 VMC's with 5 axis units & 4 VMC's with 4 axis units
- 4 Fanuc Robodrills on with 5 Axis Units
- 2 CMM's with PH20 Probes and automatic Probe Changer and full 3D CAD measurement
- Mahr Surface Testing machine
- Mitutoyo Contour Tracing
- 2 Laser DMC Marking Machine with Camera recognition to ensure grade quality
- 2 Ultrasonic Washing machine
- QUASMO Particle Inspection Lab, Microscope with 5.0 Camera and particle analyser system





High Quality Production Processes

Gravity Die Casting



High Pressure Die Casting



3, 4 & 5 Axis CNC Machining



Testing



Ultra Sonic Washing





Casting Unit



**Cutting of
Feeder and
Risers**



Gravity Die-Casting



Degassing



Core Making





Casting Unit



**Thermal De-Coring
and Sand Knock Out**



Shot Blasting



Hardness Testing Lab



General View Of HPDC Floor



Our 400 tonne fully automatic HPDC machine with auto ladle & auto spray, auto ejection



New 1000 tonne fully automatic machine with auto pouring , auto spray & auto ejection machine in planning to buy in 2019.



32



High Pressure Die-Casting (HPDC)

Example of the Development of a 10 cavity die Solution with help of Material Flow Simulations, ensuring first time right and meeting customer cost expectations. Clipping tool also designed to cut 10 cavities in one time

WWW.JESPLINDIA.COM

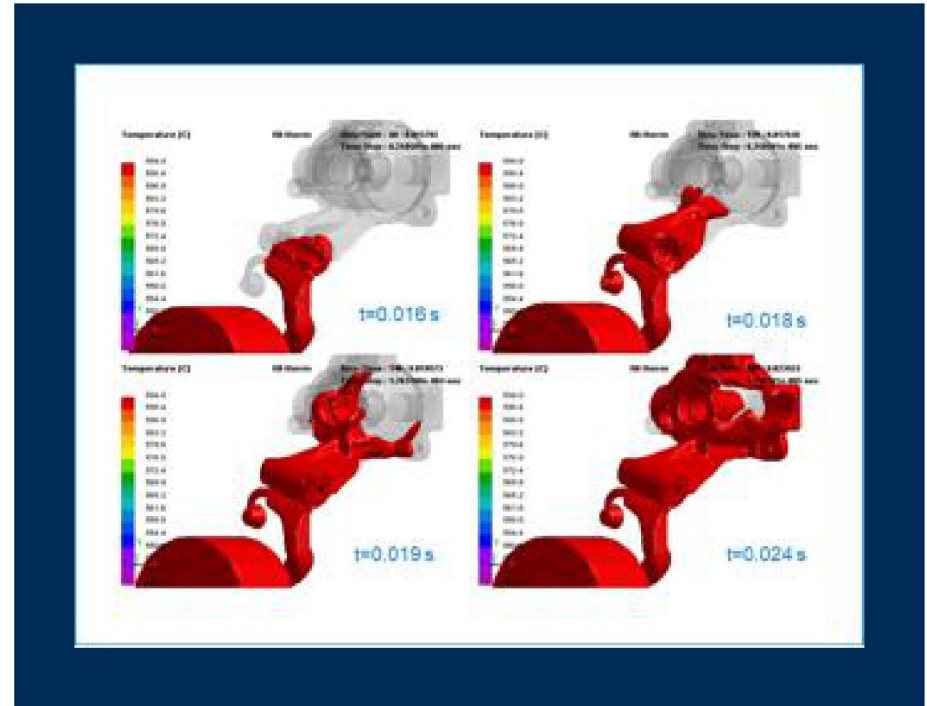


Casting Simulation

Simulation facility increases the productivity of the part with the benefits of casting mold flow simulation analysis.

Benefits of the Simulation:

- ⑩ Design Improvements
- ⑩ Value Addition
- ⑩ Savings During Regular Production
- ⑩ Saving Costs In Trials

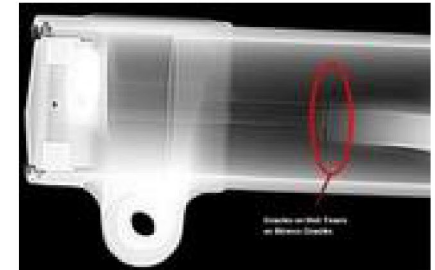
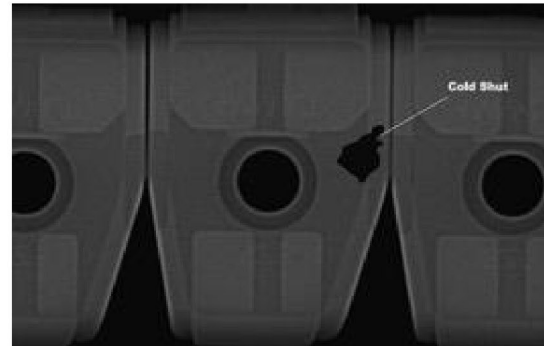
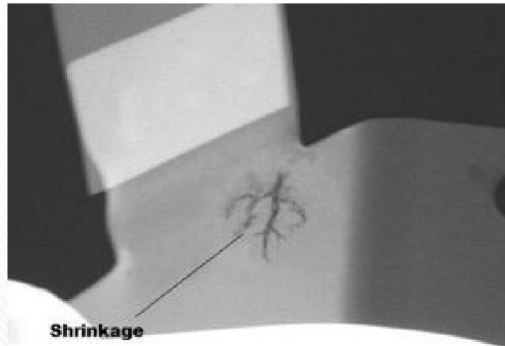
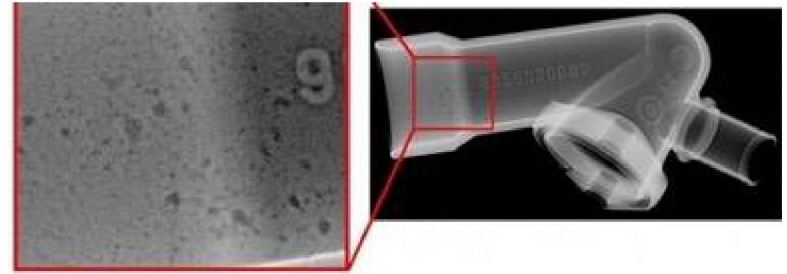




X-Ray and CT Scanning

Digital Real-time Radiography/ CT Scan Machine with world-class advanced technology is used to enhance the quality of Casting Product.

First Time Right with 3D Model comparison of a scanned image.





Machining Unit



Machine Shop



Brother Machining Cell



Ultrasonic Washing Machine



Bmw & Daimler Machining Lines





4 Station Ultrasonic Washing Machines

Incorporated in our bespoke grey room for added security of our ready to use finished products working to global automotive cleanliness standards.





Inspection Facility



Full Tessa CNC co-ordinate measuring machine (CMM)



2D Tessa Height Machine



Mitutoyo CNC co-ordinate measuring machine (CMM)



Final Inspection & Dock Audit

Every Part is checked against International Automotive Quality Standards for Porosity and other defects prior to dispatch





Investing In People & Management





Our Products





**Compressor
Cover B-48**



**Compressor
Cover N-20**



**Compressor
Cover M-24**





Housing, D9



Housing, D12



**Engine Guard
Top Mount**



Alloy Wheel

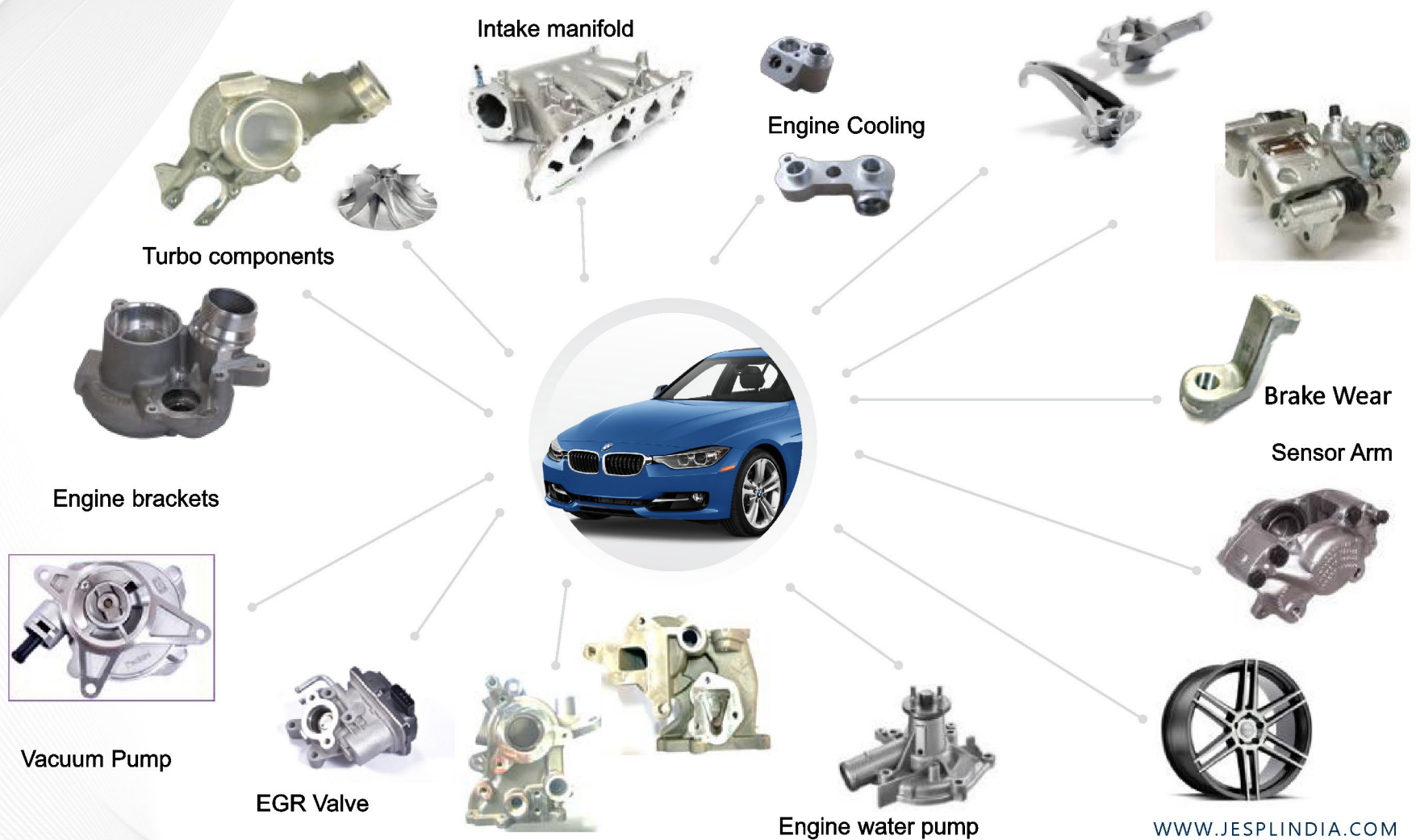


Wear Sensor Arm



Cover







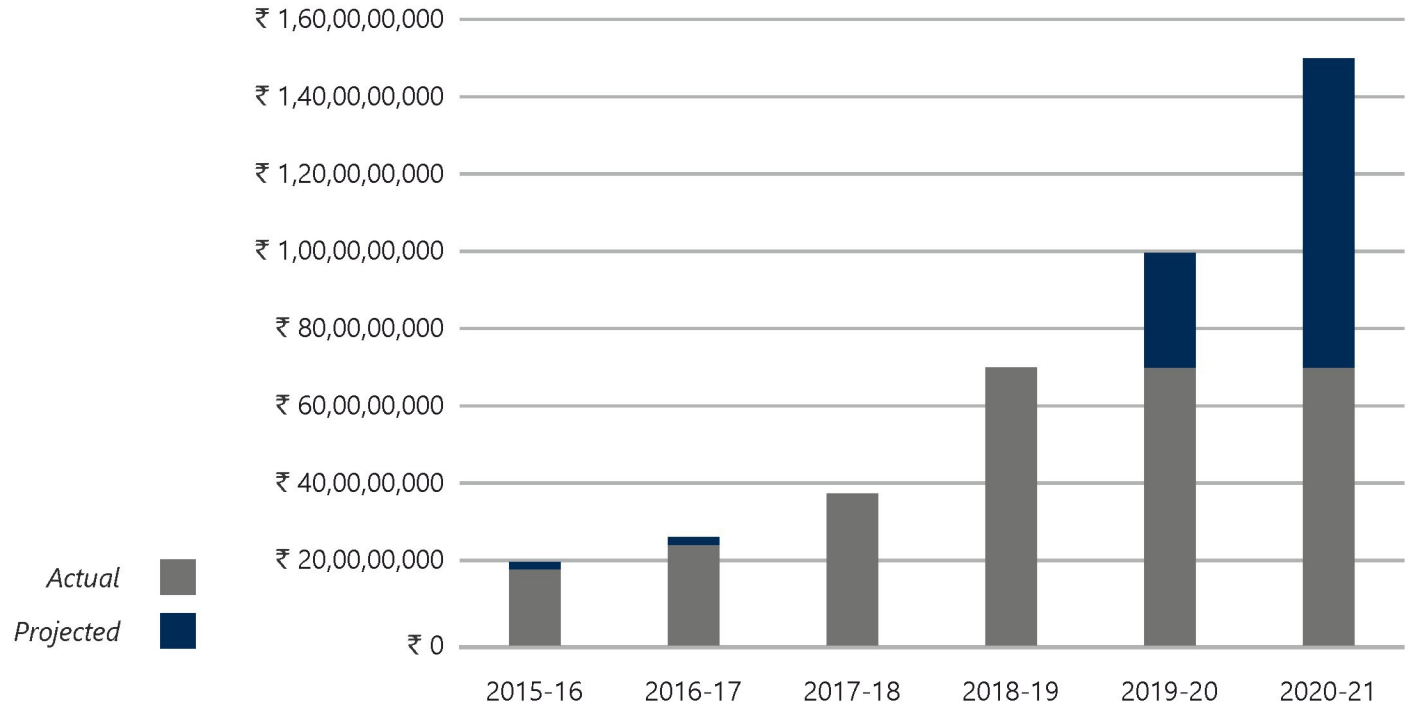
Financials

FIN





TURNOVER





Product Share - Current

3%

White Goods

10%

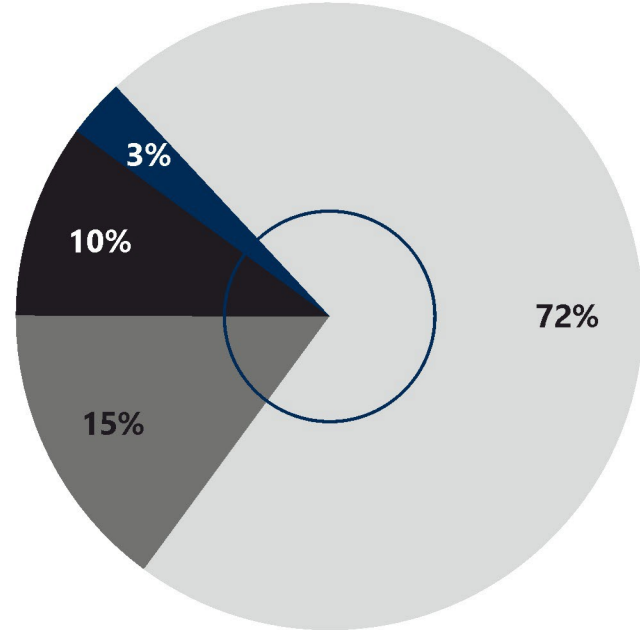
Airconditioning Parts

15%

Brakes

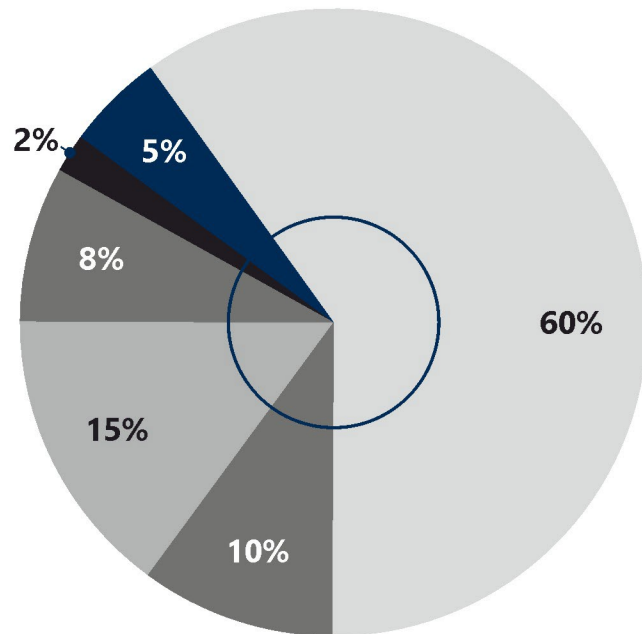
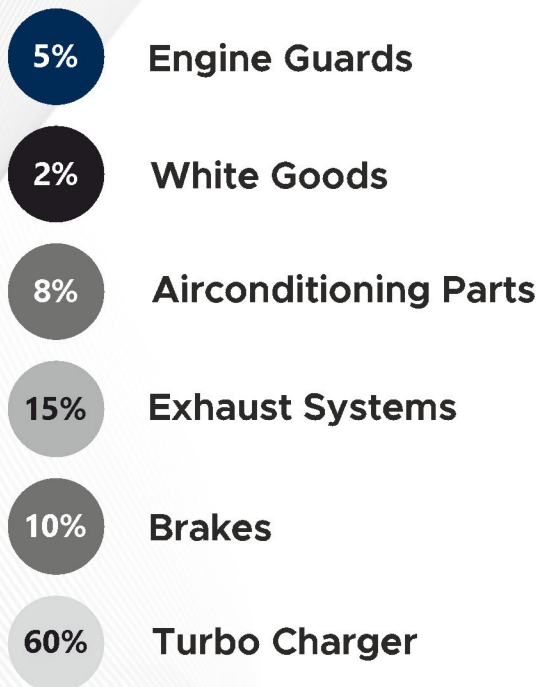
72%

Turbo Charger





Product Share - Future





Investment Profile For India Facility



New casting unit for upcoming projects will be ready by mid-2019 and will double the present capacity.



New machining unit soon will be ready.



Automation in casting as well as in machining section by implementing robotic cell in GDC and robotics arms in machining. The plan is already in process and will be implemented by this year end.



Water recycling to be implemented by December 2019 which is also inline with our environmental policies.



Conclusion





Corporate Social Responsibility (CSR)

- Water tank to solve the drinking water problem in nearby village.
- Free eye camps providing eye test facilities to over 2500 under-privileged people. Eye operations and free glasses have also been provided to those in need.
- Raised funds for construction activities in Gurudwara Sahib near factory premises.
- Contributed to air curtains at Panchokhra Sahib Gurudwara which helped keep out the pests from Gurudwara Sahib.



Health - Hygiene - Education

Clean Water

Air Curtain at Gurudwara

Medical Camps

Free
Examination

Free
Treatment

Education

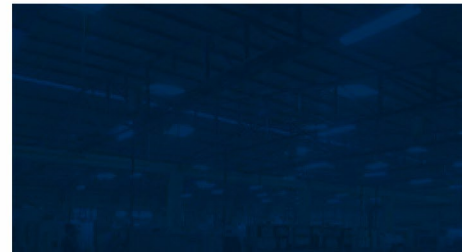
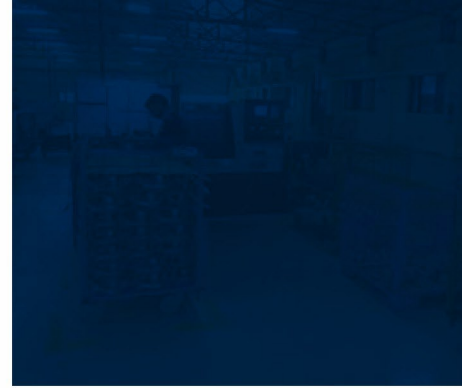
Sponsorship Program

STEM Ambassadors



Summary

- Expertise in the Automotive Business.
- IATF16949, ISO14001 & OSHAS 18001 certified Foundry and Machining Unit.
- Global “Blue Chip” customer base.
- 500+ Highly trained and experienced team.
- First class manufacturing facilities with good, modern and robust machinery.
- Ability to supply competitive cost quality machined castings and engineered components from India across the globe.
- Significant growth potential.
- An environment for our people to grow as part of our team.
- Picnic and sports activity and employee welfare activities such as employee of the month.





Contact



Salinder Saini - CEO



+91(0)1762 330201/ +91(0)98782-57708



saini@jesplindia.com



Harminder Jagdev - President



+44-75958-94903



harminder@jesplindia.com/ harminder@leicesterprecision.co.uk



Jagdev Engineering Solutions Pvt. Ltd.-

Village Sitarpur, P. O. Lalru, Tehsil Derabassi,

Distt. S.A.S Nagar, Mohali, Punjab - 140501, India

info@jesplindia.com



Thank You

