

Start Your
Great Escape

Project By



MITTAL GROUP

Contact Us:

Site Address: Sheesh Mahal Colony, Dabwali Road, Bathinda
Corporate Office: Hazi Rattan Link Road Bathinda-151005 Punjab, INDIA

+91 77173 03568 sales.sheeshmahal@mittalgroup.co.in
www.mittalgroup.co.in

Connect with us on: [f](#) [@](#) [t](#) [v](#)



An Upcoming Luxury Landmark

Disclaimer: All pictures, plans, layouts, information, data and details included in this brochure are indicative only and may change at any time up to the final "as built" status in accordance with final designs of the project.

A Project By



MITTAL GROUP





We are here

to fulfill

your wish

of a

Dream Home

Come. Live.
The Resort Life

Aerial View

Disclaimer: All pictures, plans, layouts, information, data and details included in this brochure are indicative only and may change at any time up to the final "as built" status in accordance with final designs of the project.

Disclaimer: All pictures, plans, layouts, information, data and details included in this brochure are indicative only and may change at any time up to the final "as built" status in accordance with final designs of the project.

Experience
The World Of
Luxury
&
Tranquility



Home is a starting place for Love, Peace, and Dreams. At Skyline you can enter a world full of opulence that lets your soul rejuvenate and calm your mind.



Disclaimer: All pictures, plans, layouts, information, data and details included in this brochure are indicative only and may change at any time up to the final "as built" status in accordance with final designs of the project.

Your Quest for a Fine Location
Ends At Sheesh Mahal Skyline.

We know how paramount the location is.
Presenting Sheesh Mahal Skyline which is just:

	M.R.S TECHNICAL UNIVERSITY	1 KM
	AIIMS BATHINDA	2.5 KMS
	CIVIL HOSPITAL	3.5 KMS
	CIVIL LINE	4.5 KMS
	BUS STAND	5 KMS
	RAILWAY STATION	7.5 KMS
	MITTAL'S CITY MALL	8 KMS
	CENTRAL UNIVERSITY	19 KMS
	BATHINDA AIRPORT	29 KMS

Disclaimer: All pictures, plans, layouts, information, data and details included in this brochure are indicative only and may change at any time up to the final "as built" status in accordance with final designs of the project.

Your Address

- Skyline -

will be your

favourite

Holiday

Destination



A project that is truly made for the individuals who want to live a peaceful life outside the chaos of the city. Moreover, this project is fully going to make your life more convenient as well as rejuvenated.

Here, you get mesmerizing green views from almost all 3 BHK, 3 BHK + Study, 4 BHK + Study, 4 BHK Penthouse, 5 BHK + Study, 5 BHK + Study Penthouse spacious apartments.



Situated inside a Fully Developed and Integrated Township by Mittal Group



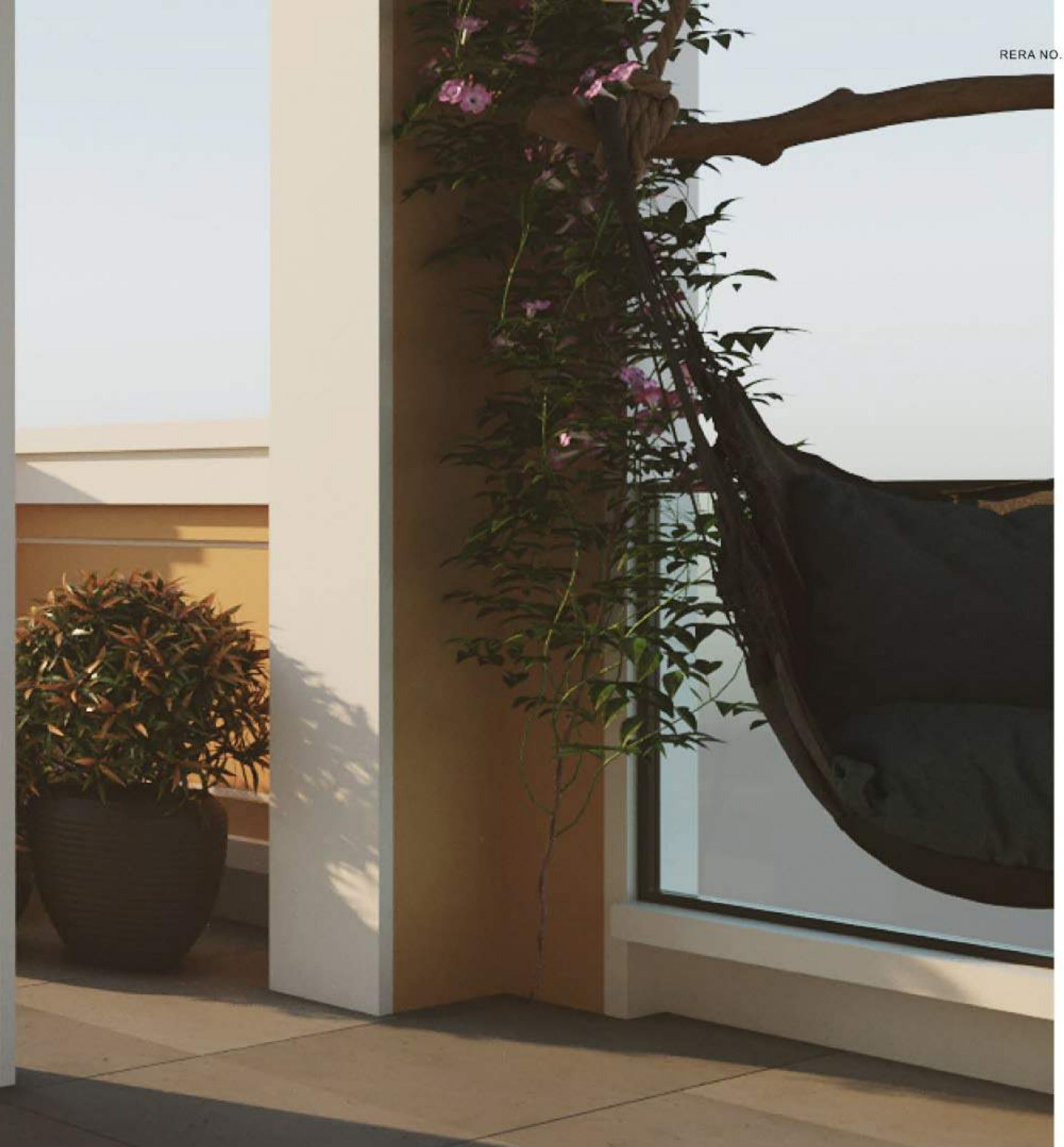
Disclaimer: All pictures, plans, layouts, information, data and details included in this brochure are indicative only and may change at any time up to the final "as built" status in accordance with the approved plans and specifications.

Disclaimer: All pictures, plans, layouts, information, data and details included in this brochure are indicative only and may change at any time up to the final "as built" status in accordance with the approved plans and specifications.

Stunning Private Amenities



Disclaimer: All pictures, plans, layouts, information, data and details included in this brochure are indicative only and may change at any time up to the final "as built" status in accordance with final designs of the project.



Disclaimer: All pictures, plans, layouts, information, data and details included in this brochure are indicative only and may change at any time up to the final "as built" status in accordance with final designs of the project.

Stilt and Basement Parking

Stilt parking provides protection from weather and provides safe space for your vehicles. Every flat will have a dedicated space allotted to them.



Kids Play Zone | Lift facility



Tulip Club and Stadium

Sheesh Mahal Skyline offers an exclusive and rich lifestyle for you and your family. The Tulip Club and Stadium at Sheesh Mahal Skyline provides you with world-class amenities like cafeteria, health club, etc with Tennis Court, Basketball Court and Cricket Ground to fill your life with recreational activities along with calmness.

Sheesh Mahal Plaza

It is the upcoming commercial center catering to the needs of everyone living in and around Dabwali Road. It will feature double story building with the benefit of high footfall in the area.



Daily Need Shop | Paved Compound | Wide Balconies



Lawn/Gardens

Large lush green lawns and Gardens that give you the reason to live happily. The spacious Lawns and Gardens at Sheesh Mahal Skyline will definitely fill your life with indulgence and give you a million reasons to smile and rejoice.



A Place
to Live a
Serene
Life



Aesthetically Pleasing Bedroom

The apartments at Sheesh Mahal Skyline offer spacious bedrooms that have enough spaces and well-ventilation to indulge and live your life to the fullest.



Stunning Drawing Room

Sheesh Mahal Skyline offers beautifully integrated drawing rooms that provide luxurious and comfortable space perfectly developed to foster high-end living conditions for the residents.



Lavish Dining Area

The premium Dining room at Sheesh Mahal Skyline can be your own kingdom where you can relish comfortability and enjoy your quality time with your kith and kin. Dining Room at Sheesh Mahal Skyline is perfect for you.



Modern Modular Kitchen

The aesthetically designed modular kitchens at Sheesh Mahal Skyline offer you positive vibes and you can cook your favorite food for your dear ones. Your contemporary as well as modular kitchen that makes your work comfortable and seamless.



Disclaimer: All pictures, plans, layouts, information, data and details included in this brochure are indicative only and may change at any time up to the final "as built" status in accordance



RERA NO.: PBRERA-BTI08-PR0825

Disclaimer: All pictures, plans, layouts, information, data and details included in this brochure are indicative only and may change at any time up to the final "as built" status in accordance with final designs of the project.

Elegant Bathroom

Apartments at Sheesh Mahal Skyline have exquisitely designed bathrooms that offer luxurious personal space to the residents while giving them ample indulgences to suffice their life with extravagance.



Indulge In
The Luxury
Like
Never Before



The Master Plan

*Meticulously
Planned*

Disclaimer: All pictures, plans, layouts, information, data and details included in this brochure are indicative only and may change at any time up to the final "as built" status in accordance with final designs of the project.

RERA NO.: PBRERA-BT108-PR0825

- LEGEND:-
1. ENTRY/ EXIT
 2. CIRCULATION
 3. DROP OFF
 4. PEDESTRIAN JOGGING/WALKING TRACK
 5. SERVICES
 7. KID'S PLAY ZONE
 8. LAWN/ GARDENS
 9. ENTRY/EXIT RAMP FOR BASEMENT
 10. WATER BODY
 11. GAZEBO
 12. PARKING
 13. SHOP



Disclaimer: All pictures, plans, layouts, information, data and details included in this brochure are indicative only and may change at any time up to the final "as built" status in accordance with final designs of the project.

*Map not to scale.

3 BHK

Floor Plan (Unit-1)

Built Up Area	1578.6 sq.ft
Carpet Area	1110.0 sq.ft
Balcony Area	373.5 sq.ft
Super Area	1973.0 sq.ft

SEGMENT FEATURES

3 Bedroom + 3 Toilet
Utility/ Store Room



Disclaimer: All pictures, plans, layouts, information, data and details included in this brochure are indicative only and may change at any time up to the final "as built" status in accordance with final designs of the project.

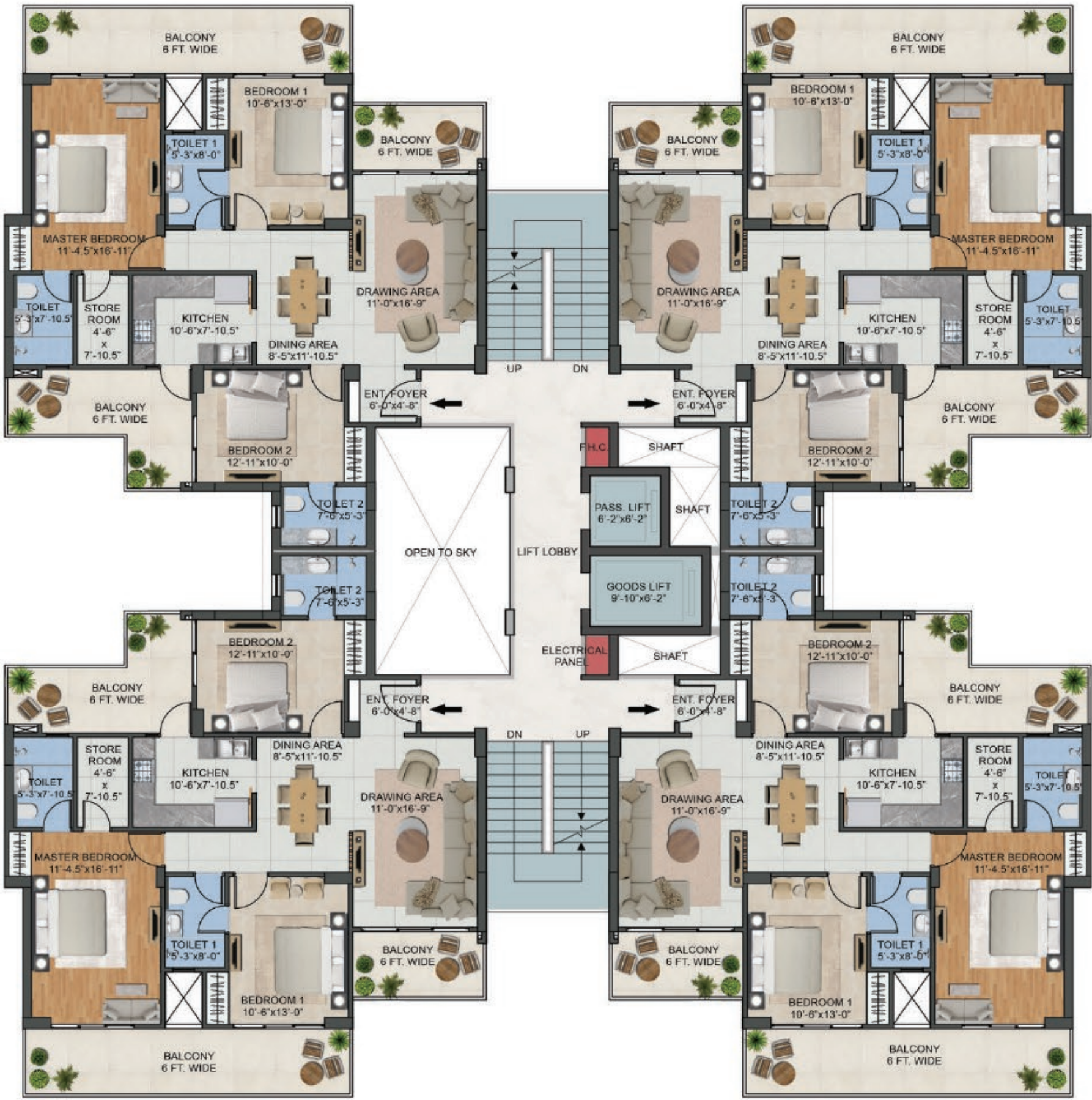
*Map not to scale.

3 BHK Cluster

Floor Plan (Unit-1)

SEGMENT FEATURES

3 Bedroom + 3 Toilet
Utility/ Store Room



Disclaimer: All pictures, plans, layouts, information, data and details included in this brochure are indicative only and may change at any time up to the final "as built" status in accordance with final designs of the project.

*Map not to scale.

3 BHK + S

Floor Plan (Unit-2)

Built Up Area	1843.6 sq.ft
Carpet Area	1318.5 sq.ft
Balcony Area	435.3 sq.ft
Super Area	2304.0 sq.ft

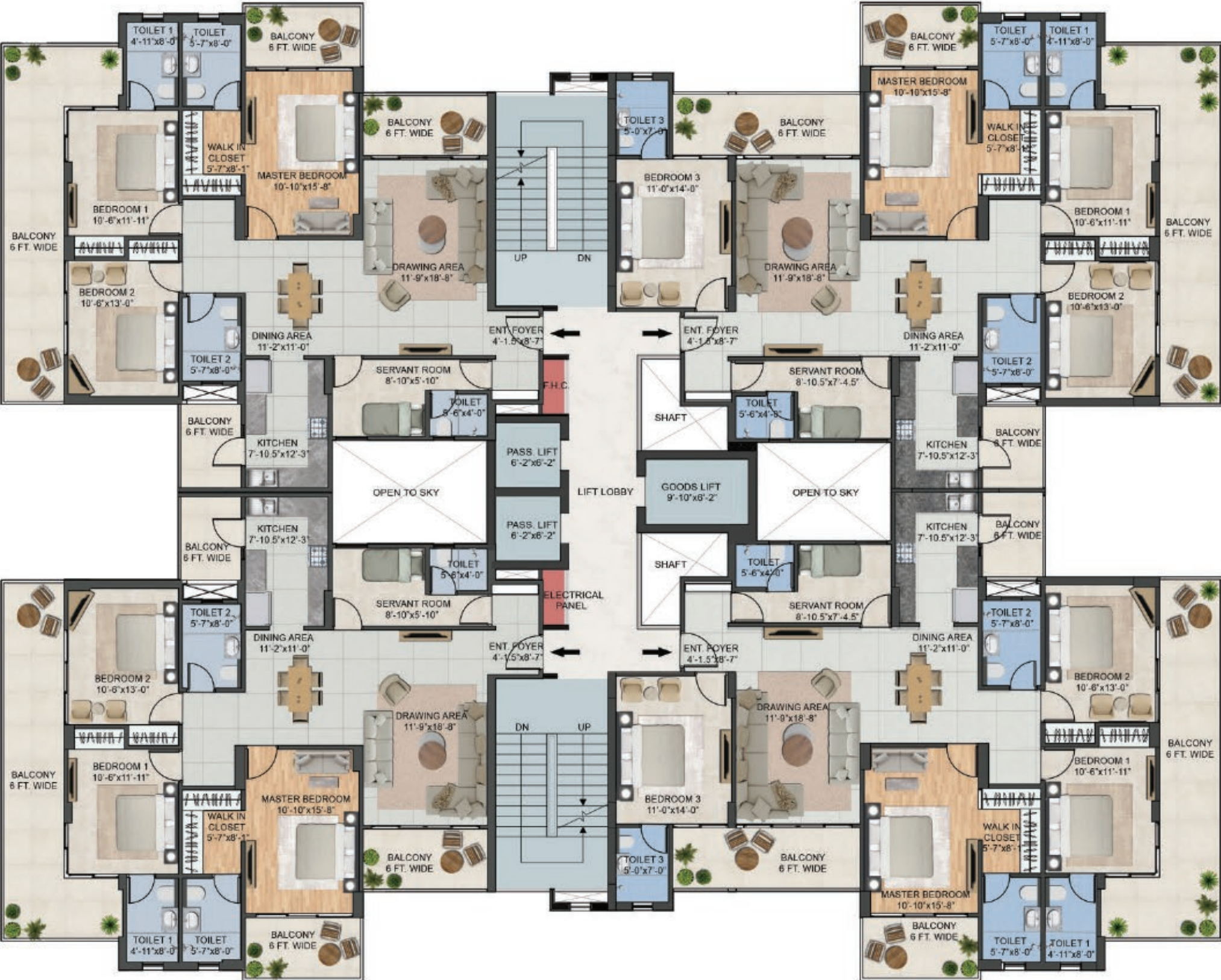
SEGMENT FEATURES

3 Bedroom + 4 Toilet + Servant
Master Bedroom with Walk In Closet



3 BHK + S Cluster

Floor Plan (Unit-2 & 3)



4 BHK + S

Floor Plan (Unit-3)

Built Up Area	2089 sq.ft
Carpet Area	1515.2 sq.ft
Balcony Area	466.7 sq.ft
Super Area	2611.0 sq.ft

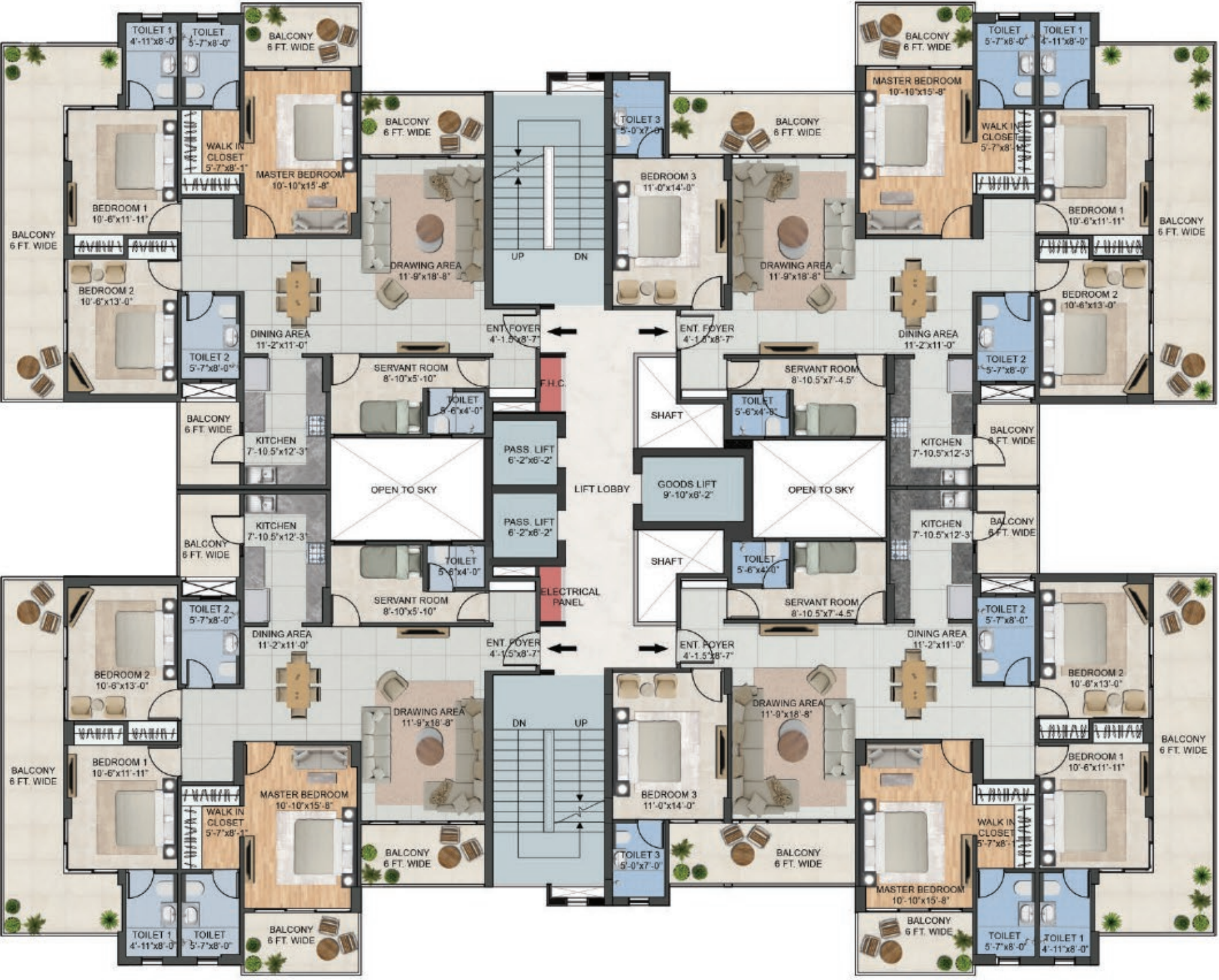
SEGMENT FEATURES

4 Bedroom + 4 Toilet + Servant
Master Bedroom with Walk In Closet



4 BHK + S Cluster

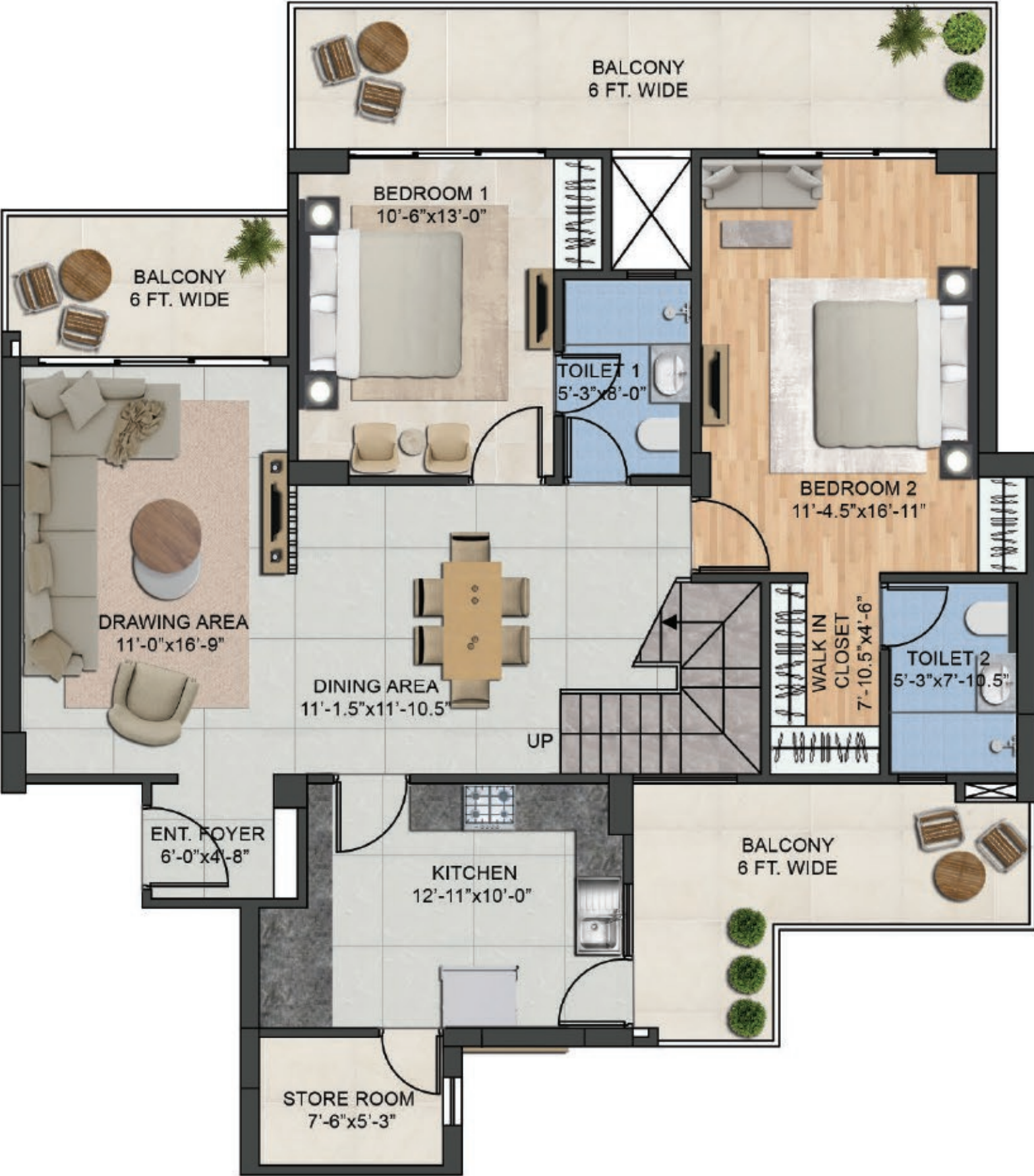
Floor Plan (Unit-2 & 3)



4 BHK Penthouse

Floor Plan (Unit-4A)
Lower Duplex

Built Up Area	2140.5 sq.ft
Carpet Area	1610.3 sq.ft
Balcony Area	373.5 sq.ft
Super Area	2675.0 sq.ft
Terrace Area	955.6 sq.ft



SEGMENT FEATURES

4 Bedroom + 4 Toilet + Store Room + Open Terrace
Master Bedroom with Walk In Closet

Disclaimer: All pictures, plans, layouts, information, data and details included in this brochure are indicative only and may change at any time up to the final "as built" status in accordance with final designs of the project.

*Map not to scale.

4 BHK Penthouse

Floor Plan (Unit-4B)
Upper Duplex

Built Up Area	2140.5 sq.ft
Carpet Area	1610.3 sq.ft
Balcony Area	373.5 sq.ft
Super Area	2675.0 sq.ft
Terrace Area	955.6 sq.ft



SEGMENT FEATURES

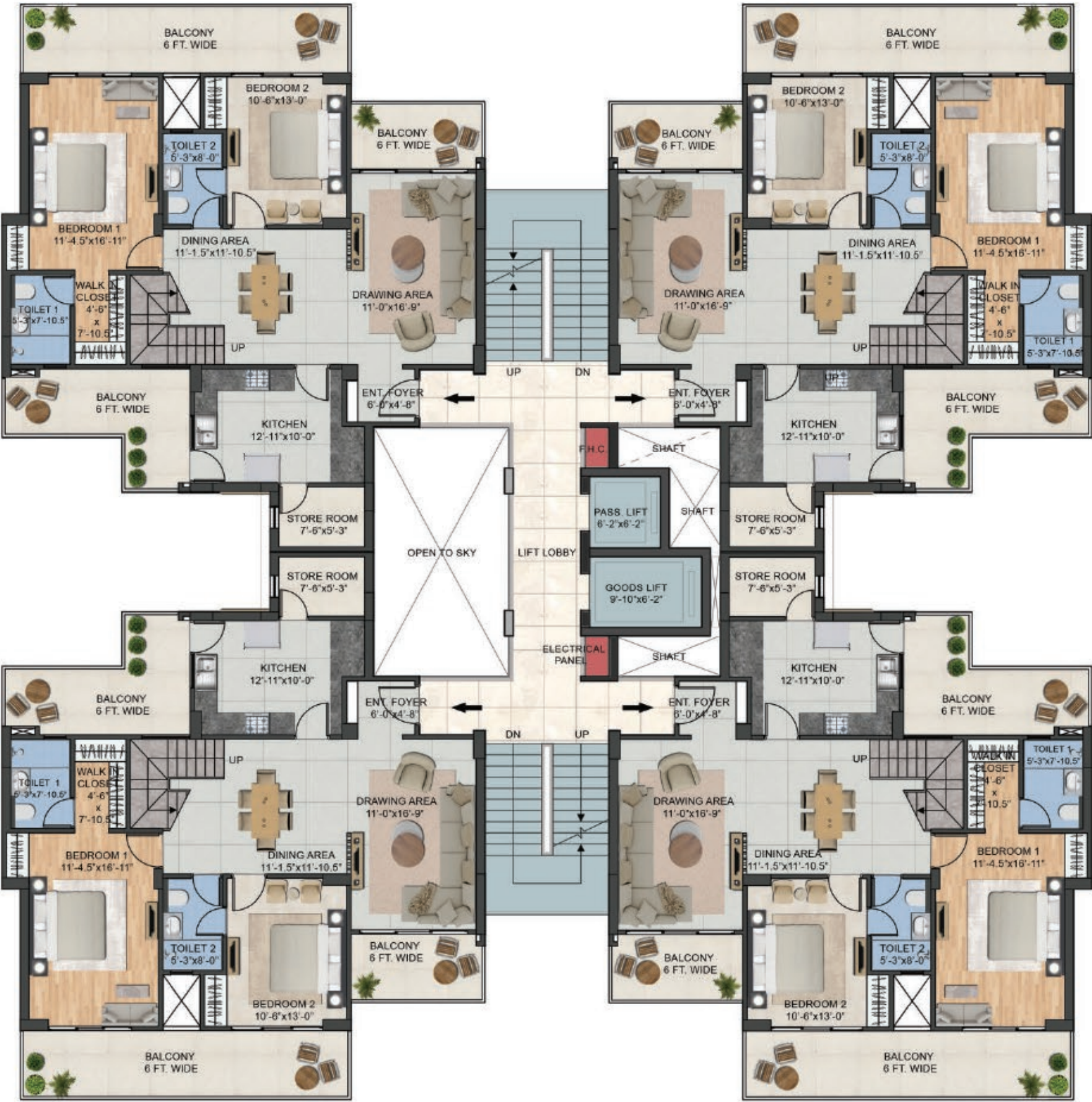
4 Bedroom + 4 Toilet + Store Room + Open Terrace
Master Bedroom with Walk In Closet

Disclaimer: All pictures, plans, layouts, information, data and details included in this brochure are indicative only and may change at any time up to the final "as built" status in accordance with final designs of the project.

*Map not to scale.

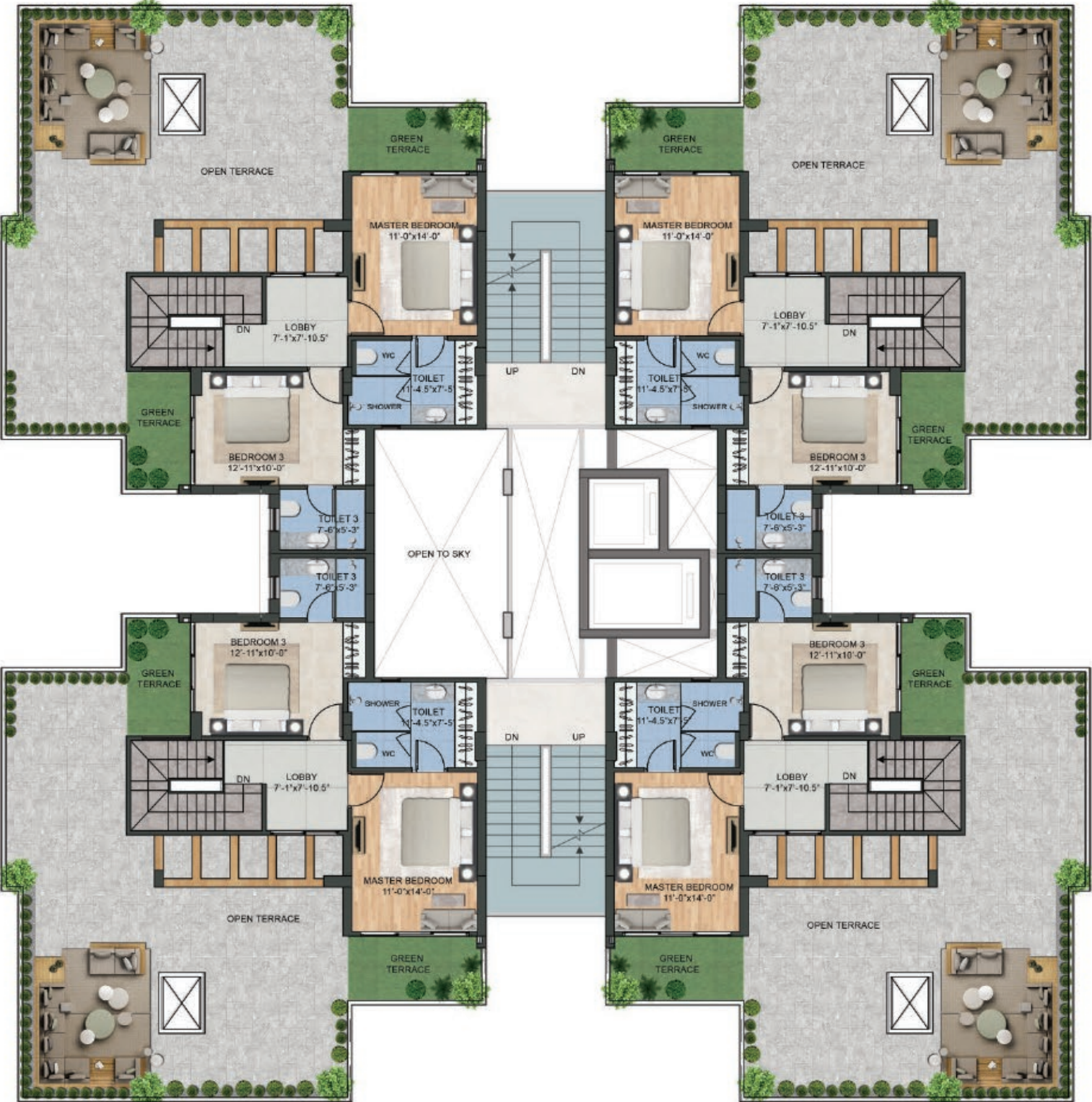
4 BHK Penthouse
Cluster

Floor Plan (Unit-4)
Lower Duplex



4 BHK Penthouse
Cluster

Floor Plan (Unit-4)
Upper Duplex



4 BHK + S Penthouse

Floor Plan (Unit-5A)
Lower Duplex

Built Up Area	2567.9 sq.ft
Carpet Area	2016.2 sq.ft
Balcony Area	385.0 sq.ft
Super Area	3209.0 sq.ft
Terrace Area	895.5 sq.ft



SEGMENT FEATURES

4 Bedroom + 6 Toilet + Servant Room + Open Terrace
2 Master Bedrooms with Walk In Closet

4 BHK + S Penthouse

Floor Plan (Unit-5B)
Upper Duplex

Built Up Area	2567.9 sq.ft
Carpet Area	2016.2 sq.ft
Balcony Area	385.0 sq.ft
Super Area	3209.0 sq.ft
Terrace Area	895.5 sq.ft

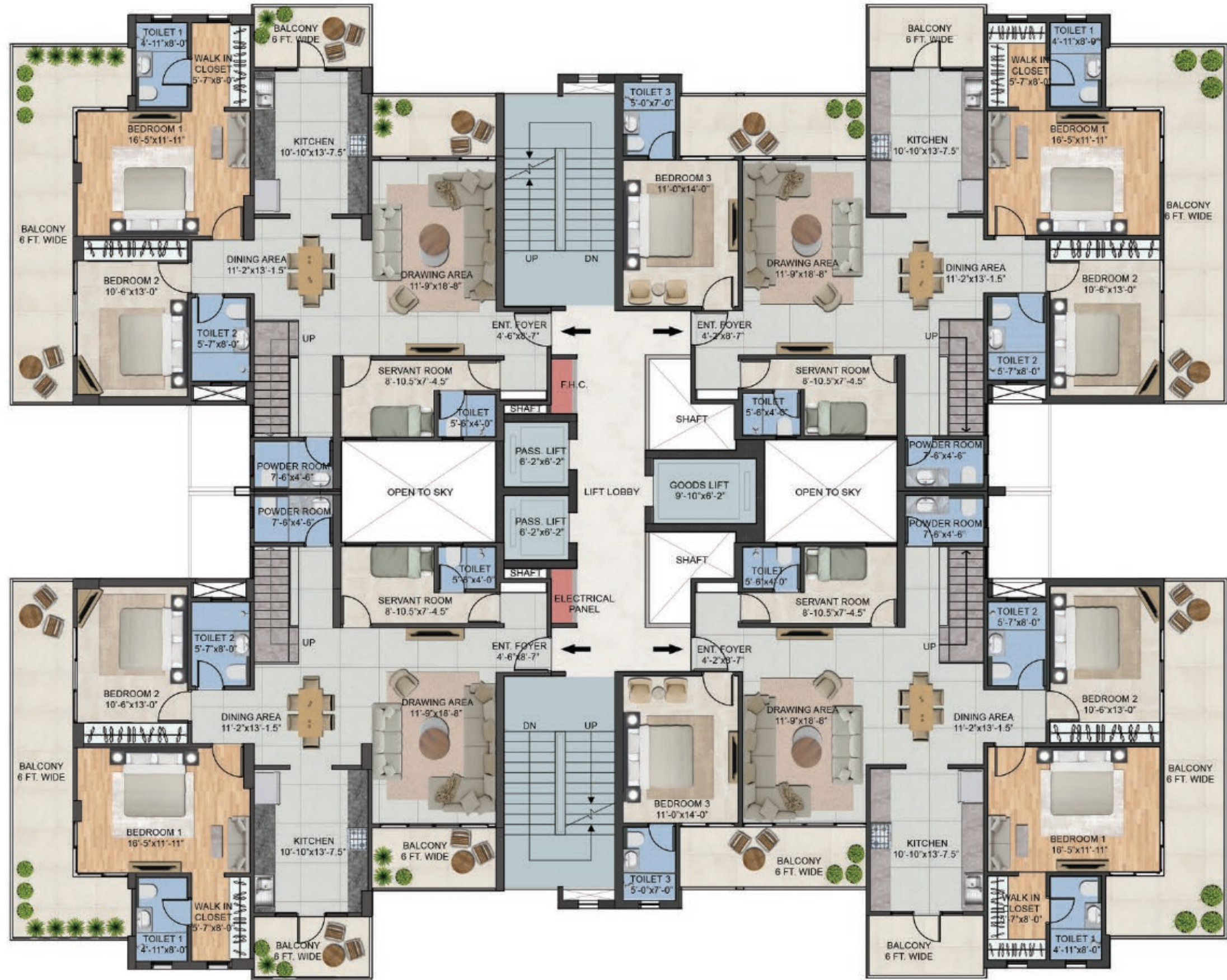


SEGMENT FEATURES

4 Bedroom + 6 Toilet + Servant Room + Open Terrace
2 Master Bedrooms with Walk In Closet

4 BHK + S
Penthouse Cluster

Floor Plan (Unit-5 & 6)
Lower Duplex



Disclaimer: All pictures, plans, layouts, information, data and details included in this brochure are indicative only and may change at any time up to the final "as built" status in accordance with final designs of the project.

*Map not to scale.

4 BHK + S
Penthouse Cluster

Floor Plan (Unit-5 & 6)
Upper Duplex



Disclaimer: All pictures, plans, layouts, information, data and details included in this brochure are indicative only and may change at any time up to the final "as built" status in accordance with final designs of the project.

*Map not to scale.

5 BHK + S Penthouse

Floor Plan (Unit-6A)
Lower Duplex

Built Up Area	2980.1 sq.ft
Carpet Area	2295.8 sq.ft
Balcony Area	416.5 sq.ft
Super Area	3725.0 sq.ft
Terrace Area	974.8 sq.ft



SEGMENT FEATURES

5 Bedroom + 7 Toilet + Servant Room + Open Terrace
2 Master Bedrooms with Walk In Closet

5 BHK + S Penthouse

Floor Plan (Unit-6B)
Upper Duplex

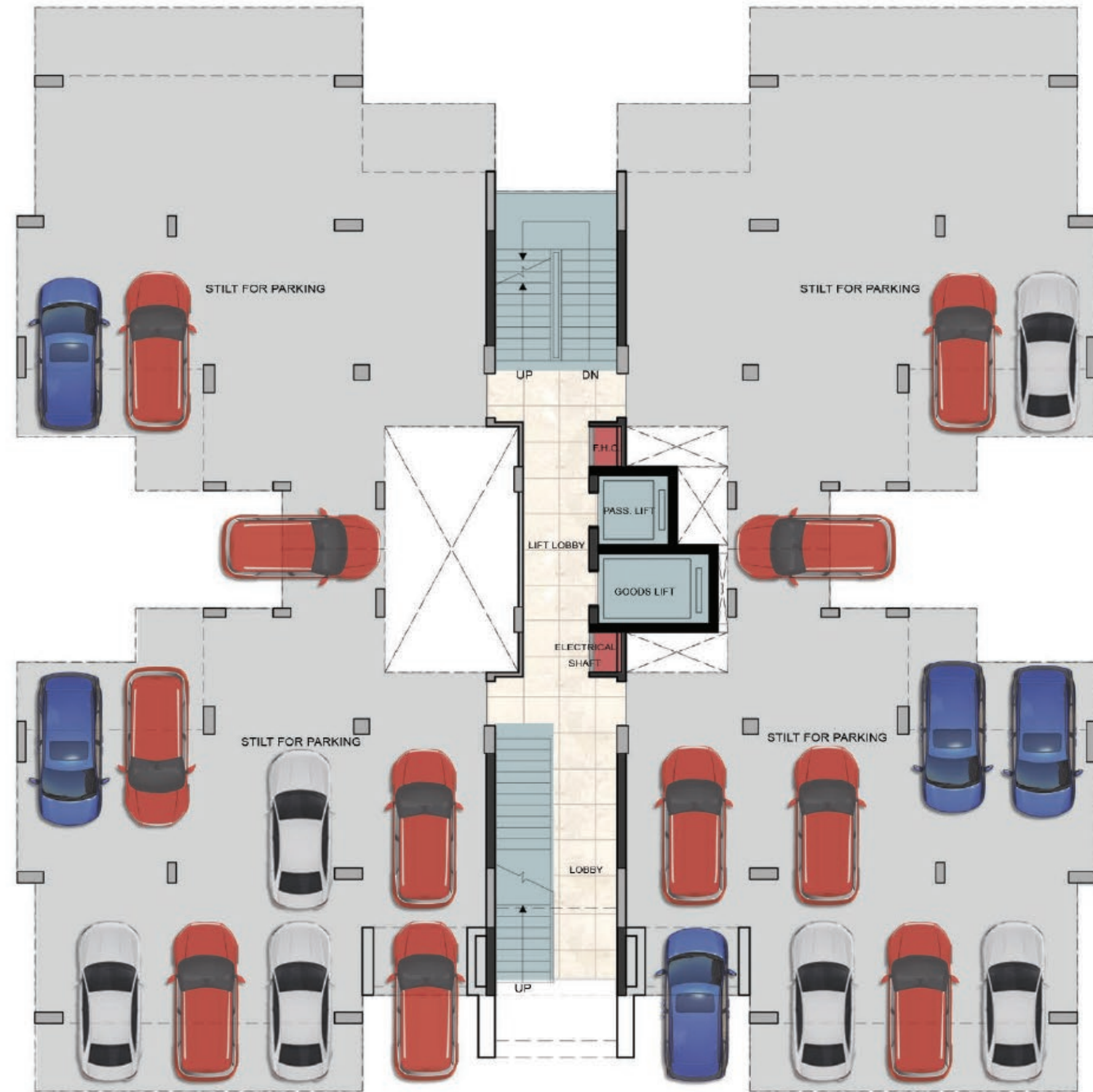
Built Up Area	2980.1 sq.ft
Carpet Area	2295.8 sq.ft
Balcony Area	416.5 sq.ft
Super Area	3725.0 sq.ft
Terrace Area	974.8 sq.ft



SEGMENT FEATURES

5 Bedroom + 7 Toilet + Servant Room + Open Terrace
2 Master Bedrooms with Walk In Closet

Stilt Floor
Floor Plan (Tower Type-1)



Disclaimer: All pictures, plans, layouts, information, data and details included in this brochure are indicative only and may change at any time up to the final "as built" status in accordance with final designs of the project.

*Map not to scale.

Stilt Floor
Floor Plan (Tower Type-2)



Disclaimer: All pictures, plans, layouts, information, data and details included in this brochure are indicative only and may change at any time up to the final "as built" status in accordance with final designs of the project.

*Map not to scale.



A Complete
Luxury Lifestyle



Disclaimer: All pictures, plans, layouts, information, data and details included in this brochure are indicative only and may change at any time up to the final "as built" status in accordance with final designs of the project.

RERA NO.: PBRERA-BTI08-PR0825



Delivered Projects

We are a company known for our transparency and commitment to customer service excellence that are built upon years of successfully delivering quality real-estate projects in a timely manner in both the residential and commercial sectors.



Ganpati Enclave



Sheesh Mahal Colony



Sushant City-I



Sushant City-II



D D Mittal Towers



Sheesh Mahal Heights



Sheesh Mahal Plaza
(Upcoming)



Tulip Club & Stadium



Comfort Inn



MIHM Institute



Mittal City Mall



BCL Industries
(Distillery & Refinery Unit)

Disclaimer: All pictures, plans, layouts, information, data and details included in this brochure are indicative only and may change at any time up to the final "as built" status in accordance with final designs of the project.