



Sheesh Mahal Plaza

www.mittalgroup.co.in



MITTAL GROUP



AN ADDRESS TO
DEMONSTRATE
YOUR SUCCESS

FINEST SCOs





MITTAL GROUP

We are a company known for our transparency and commitment to customer service excellence that are built upon years of successfully delivering quality real-estate projects in a timely manner in both the residential and commercial sectors.

We have transformed ourselves heavily with the changing trends and times in the real estate industry of the region. Ganpati Enclave, Sheesh Mahal Colony, Sheesh Mahal Heights, Sushant City 1, Sushant City 2, and DD Mittal Towers are some of our signature projects that have redefined luxury living in the region. These projects are complete, and the inventory is available to use.

Mittal City Mall was our first effort into commercial real estate. The mall has now grown to become the most important commercial property in the Malwa Region. The mall also includes a 98 room Comfort Inn Hotel that has changed the local hospitality business. Pantaloon, Cinepolis, Dominos, Subway, Barbeque Nation, Peter England, and others have flagship stores in the mall.

We build houses where nature knocks on your door in all its riches and glory. We strive with a single goal in mind: to create environment friendly homes with a low carbon footprint.



Ganpati Enclave



Sheesh Mahal Colony



Sushant City-I



Sushant City-II



D D Mittal Towers



Mittal City Mall



Comfort Inn



MIHM Institute



Tulip Club & Stadium



Sheesh Mahal Heights



Sheesh Mahal Skyline
(Upcoming)



BCL Industries
(Distillery Unit)



Opportunity is emblazoned on the façade of Sheesh Mahal Plaza. Opportunity to dine, opportunity to work, opportunity to live, opportunity to entertain and above all, opportunity to invest—and it redefines the lifestyle standards. There is more you can do here than you ever expected.

The project offers some unique features such as

- Double story building for office suites (G+1)
- Basement and Terrace area available
- Parking space in front of showrooms
- Unmatched visibility facing Dabwali Road
- Provision for wet point and exhaust point
- Dedicated walk way in front
- Natural light and sun-facing and much more

It is the only commercial center catering to the needs of everyone living in and around Dabwali Road. This area boasts premium residential housing apartments like Ganpati Enclave and Sheesh Mahal, inhabited by influential upper-class income groups and highly educated professionals. Being on the same road as Maharaja Ranjit Singh Technical University, Sheesh Mahal Plaza gets the benefit of high footfall in the area.





Sheesh Mahal Colony is a residential project by Mittal Group. It is exquisitely designed to capture a serene modern lifestyle embraced by nature right in the midst of Bathinda. This residential development refreshes the city's landscape with its numerous green spaces and open areas. In a natural community setting, there's no need to escape the city to find your piece of solitude.



Welcome to the Ganpati Enclave, an abode of leisure and residence in the lap of opulence. It is an exclusive and privileged space for the residents. This is a type of residential society with both basic and other lavish facilities. Ganpati Enclave is one of Bathinda's most prestigious homes due to its architecture and décor.



**BOUTIQUES &
FASHION STORE**



GROCERY STORE



CLINICS



**STUDIOS &
OFFICE SPACE**



BANK/ATM



SPA/ PARLOUR



GYM/ YOGA



CAFÉ/ RESTAURANT

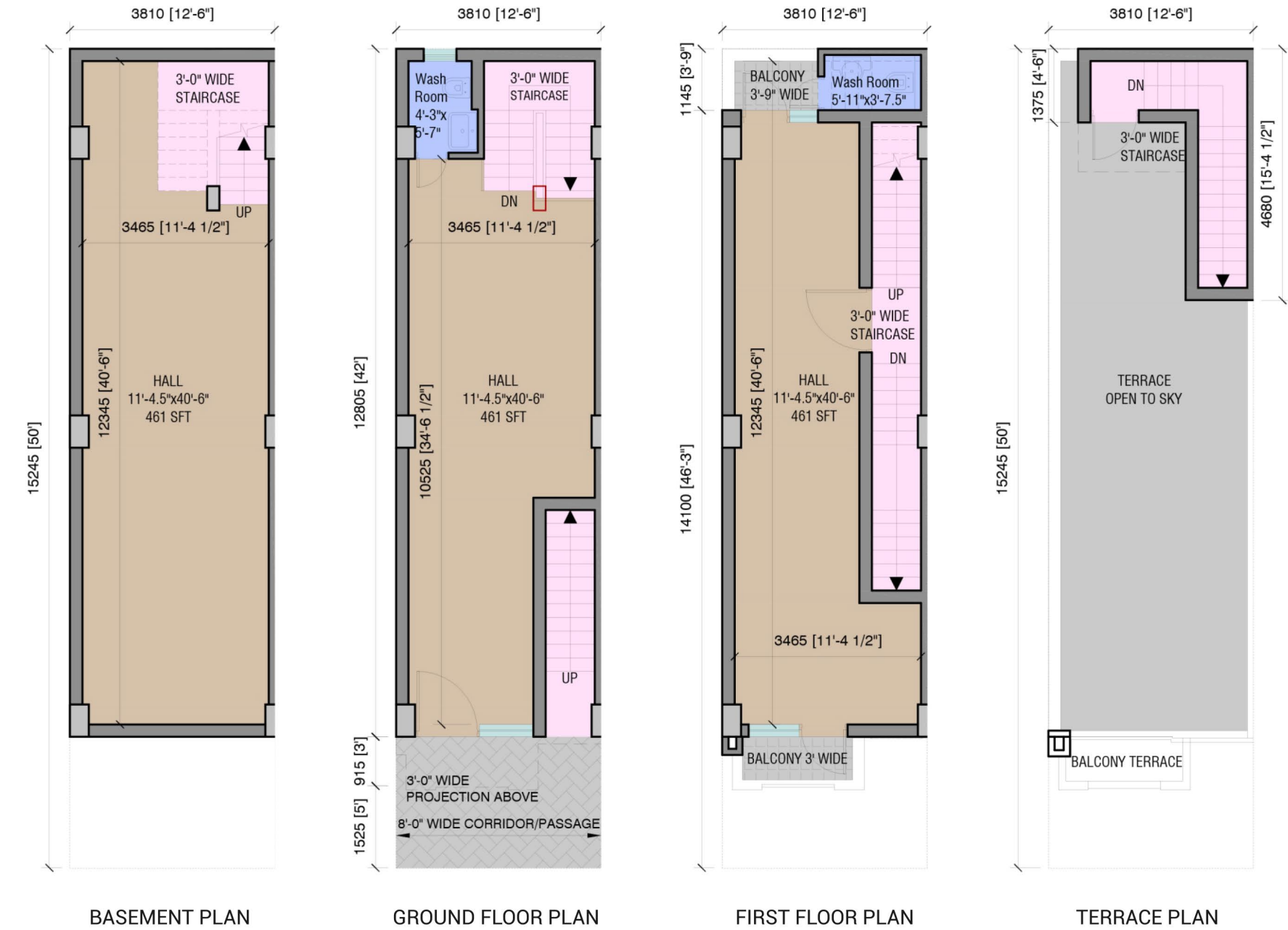


URBAN RETREAT



FLOOR PLAN

SHOPS-CUM-OFFICES



TERRACE AREA: 464 sq. ft.
SUPER AREA: 540 sq. ft.

Not To Scale

Plot No. 37
625 Sq.ft. (12'6"x50')

FLOOR	CARPET AREA	COVERED AREA	SUPER AREA
Basement	438 sq.ft.	525 sq.ft.	613 sq.ft.
Ground Floor	360 sq.ft.	472 sq.ft.	549 sq.ft.
1st Floor	305 sq.ft.	443 sq.ft.	515 sq.ft.



SHOP THERAPY

PRIME LOCATION

Sheesh Mahal Plaza's excellent transport links only enhance its value and practicality. Its locality provide a solid connection with the rest of the world.

	Aims Hospital	3.2 Km
	Airport	29 Km
	Mittal City Mall	7.5 Km
	Railway Station	6.3 Km
	Bus Stand	4.6 Km
	MRS Technical University	1.5 Km



SHOP
EAT
WORK
PLAY
EARN
STAY



Site Address: Sheesh Mahal Colony, Dabwali Road, Bathinda

Corporate Office: Hazi Rattan Link Road Bathinda-151005 Punjab, INDIA

 +91 77173 03568

 sales.sheeshmahal@mittalgroup.co.in

 www.mittalgroup.co.in

Connect with us on:    