



# MITTAL CITY MALL

PRIDE OF MALWA



nothing  
else  
compares

---



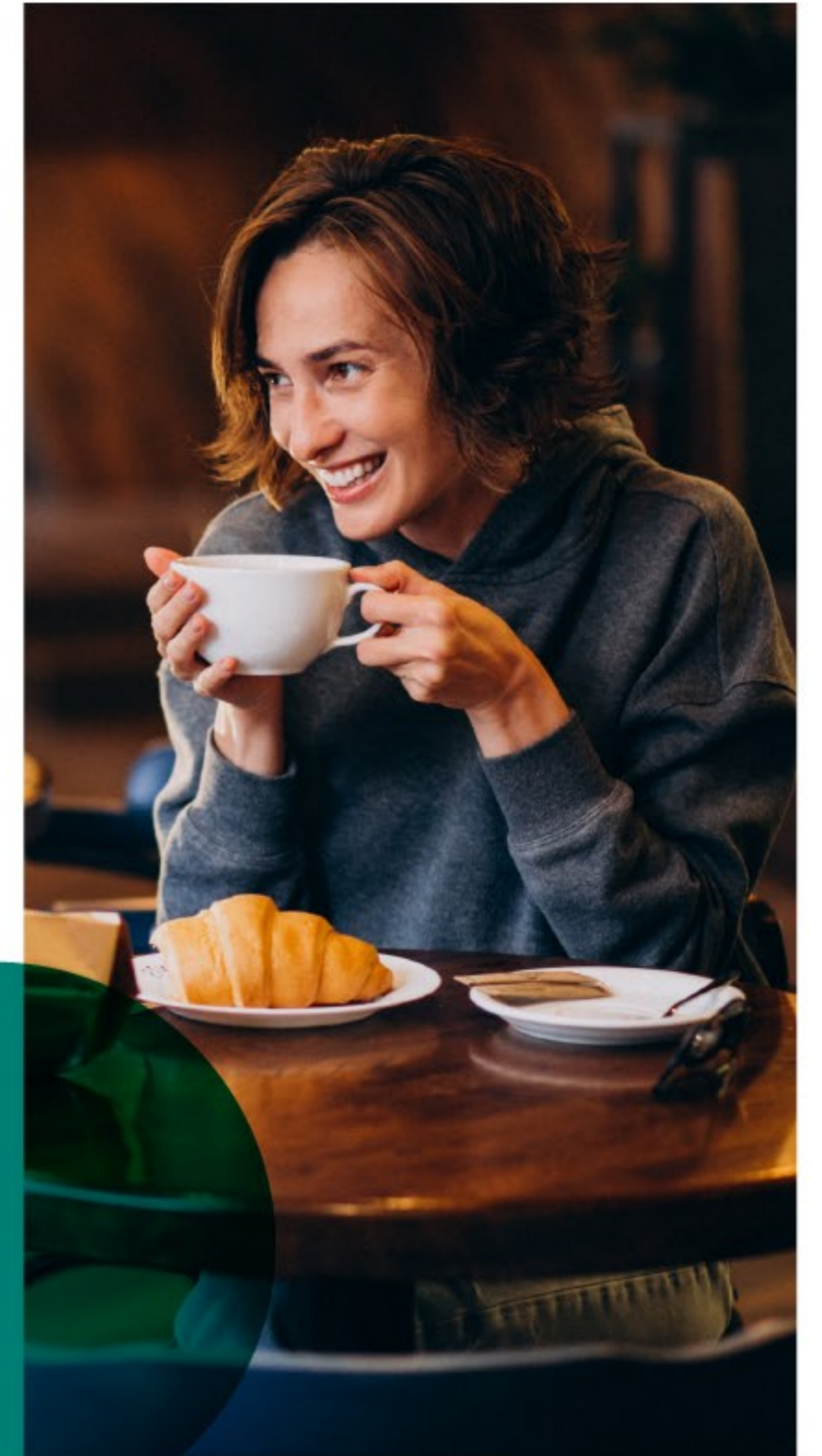
**Mittal's City Mall** was inaugurated by the Chief Minister of Punjab Shri. Prakash Singh Badal on 21<sup>ST</sup> August 2010, which is the biggest mall in the region with a total area of about 3.25 lakh sq. ft. Being centrally located, it attracts high footfall.

Accompanied by immaculate surroundings and ambiance that serves to heighten your senses to experience a truly enriched life.

Mittal city mall hence offers you various brands of shopping centers like Pantaloons and Reliance Smart Bazaar along with some refreshment corners such as Jury Café and Barbeque Nation.

Offering a gaming zone for your kids' entertainment like fun key gaming and other eating outlets like Dominos and subway to enjoy as a whole.

---



fun.food.  
entertainment.



**Being the biggest mall of the region it also comprises of:**

- Lower ground Reliance Smart Bazaar which is 27,600 sq. ft. area.
- The total area of the ground floor varies from about 34,036 sq. ft.
- The Whole sum area on the first floor is 30,119 sq. ft. out of which 24285 sq. ft. is a leased out area available for lease.
- FF-5834 sq. ft.
- The total area on the second floor is 31,473 sq.ft. out of which 27459 sq. ft. is leased out area and the area available for lease is about SF-4,014 sq. ft.
- The area on the third floor is 41,970 sq. ft. which is occupied by Fun Cinema, Foodcourt, Bars & Restaurant.

well planned  
accessibility



# impactful impression of mall

---

As this is the biggest mall in the region with build-up area 3.25 lakh sq. ft. that is centrally located and got certificates like occupancy certificate, sewage certificate, electricity certificate, and water certificate to run the mall inclusive of other advantages :

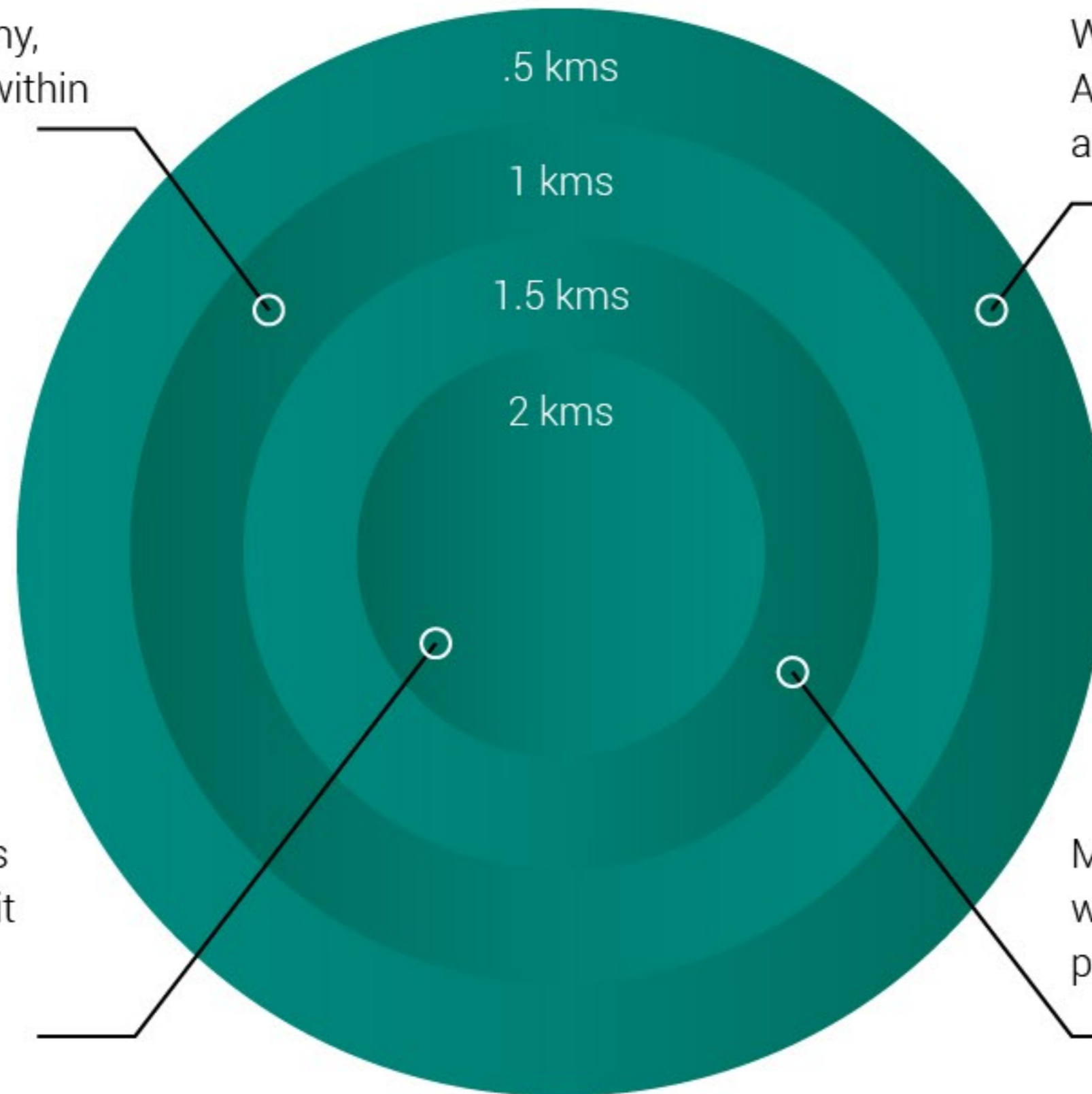
- Reliance smart bazaar, fun cinemas, food court, pantaloon, dominos, jury cafe, jockey, subway, numerouno, and many other brands occupied on different floors, 4-star hotel comfort inn 100 rooms are anchors of the mall.
- Available with 100% power backup and fully air-conditioned.
- Maximum atrium, 2 capsule lifts, 2 service lifts, 8 escalators, and 4 lifts in the hotel with a floor plate size approximately of 40,000 sq. ft.
- 10 floors, 2 basements, 5 retail, 4-star hotel

# cosmopolitan mix

---

Aggarwal Colony, Cantonment Veer Colony, NFL with a population of around 1 Lakh within 1 km of diameter.

Within 0.5 km of diameter comprises Green Avenue, Girls College, Vishal Nagar, Thermal, and Rose Garden (population of about 50,000).



Civil Lines, DAV College, Model Town, Bus Stand, Rajindra College, Power House, Ajit Road, North Estate, Kamla Nehru with around 5 lakh within 2 km of area.

Mall Road, Dhobi Bazaar, Railway Station within 1.5 km of area for around 3 Lakh population.

Mall comprises 2 level basement parking i.e. 250+ cars at a time that includes Reliance Smart Bazaar on the lower Basement and space for other anchor stores on each floor including space for another exclusive store like:



Pantaloons of about 10546 sq. and 9477 sq. ft. on the first and second floor each.

More than 100 outlets on all 3 floors and a food court approximately of about 10623 sq. ft.



Also includes Fun Cinemas of 4 screen multiplex with 1013 capacity.

And 5 floors (4th to 8th) for 4 Star Hotel Comfort Inn inclusive of 100 rooms, Terrace Garden, Bar & Restaurants.







1st 4 Star Hotel in Bathinda available with 100+ rooms comprising of:

- Banquet Halls, Party Halls
- Beer Bars, Health Club
- Terrace Garden
- Café and Restaurant

---

With a spanning area across the 4<sup>th</sup> to 8<sup>th</sup> floor of the mall.



Quick Facts of

# brand mix

Munchy's

Vivo

Subway

Dominos

Reliance  
Smart Bazaar

Kiasa

Pantaloon

Samsung  
Exclusive

Fun cinemas

Fun Key  
Game Zone

Jury café

Jockey

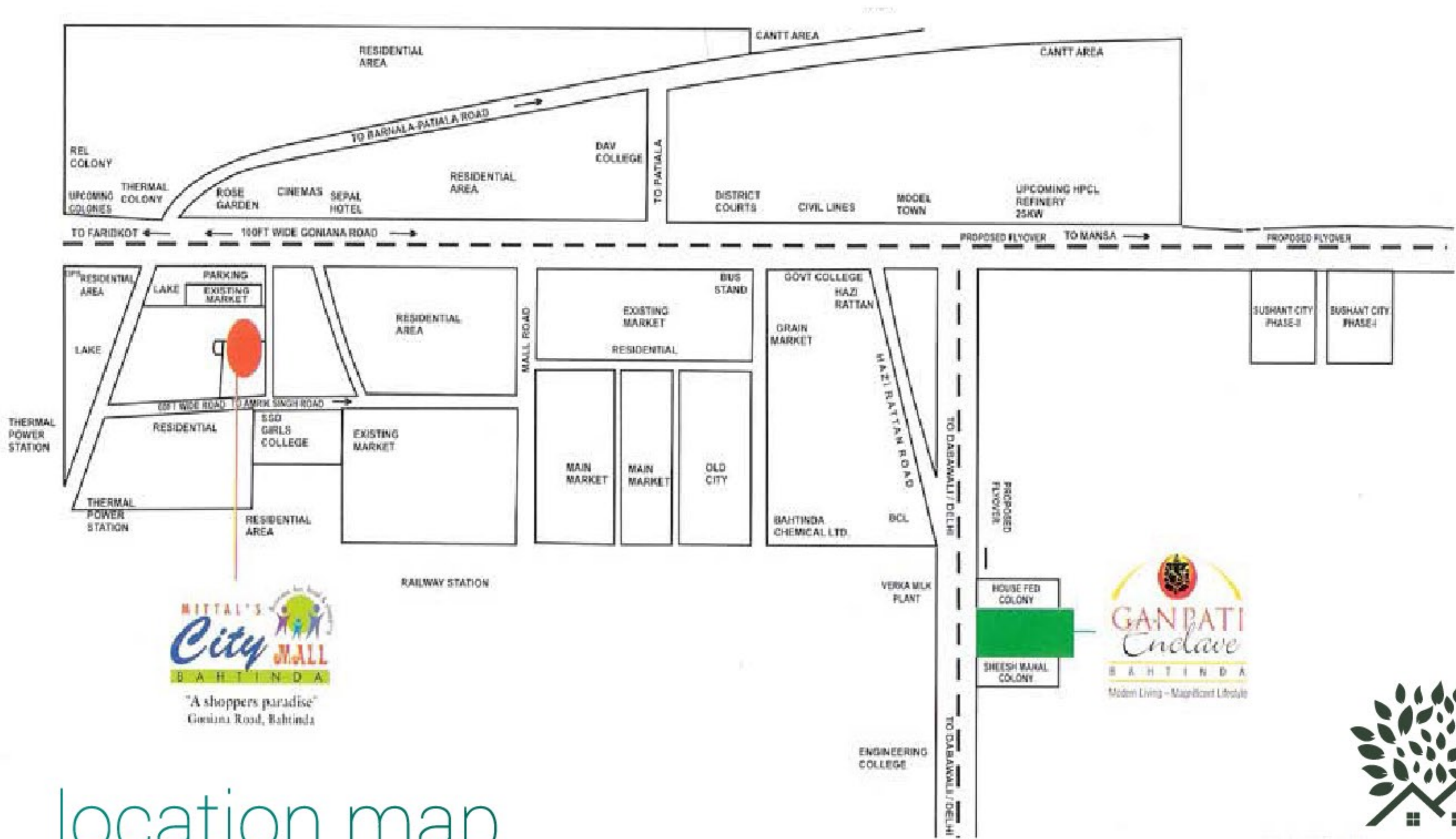
Bar-be-que  
Nation

F&B Outlets

Anchor Store

Exclusive Store

Gaming Zone



"A shoppers paradise"  
Goniara Road, Bahinda



MITTAL GROUP

location map